



**Turkish Virtual Area Control Center – Bulgarian Virtual Area Control Center**

**LETTER OF AGREEMENT**  
**between**  
**SOFIA ACC – ANKARA ACC**  
**SOFIA ACC – YESILKOY APP**

**DATE: 22.03.2021**

## Introduction

This Letter of Agreement (LoA) is made between VATSIM's Europe Division's Turkish Virtual Area Control Center (TRvACC) and Bulgarian Virtual Area Control Center (BGvACC)

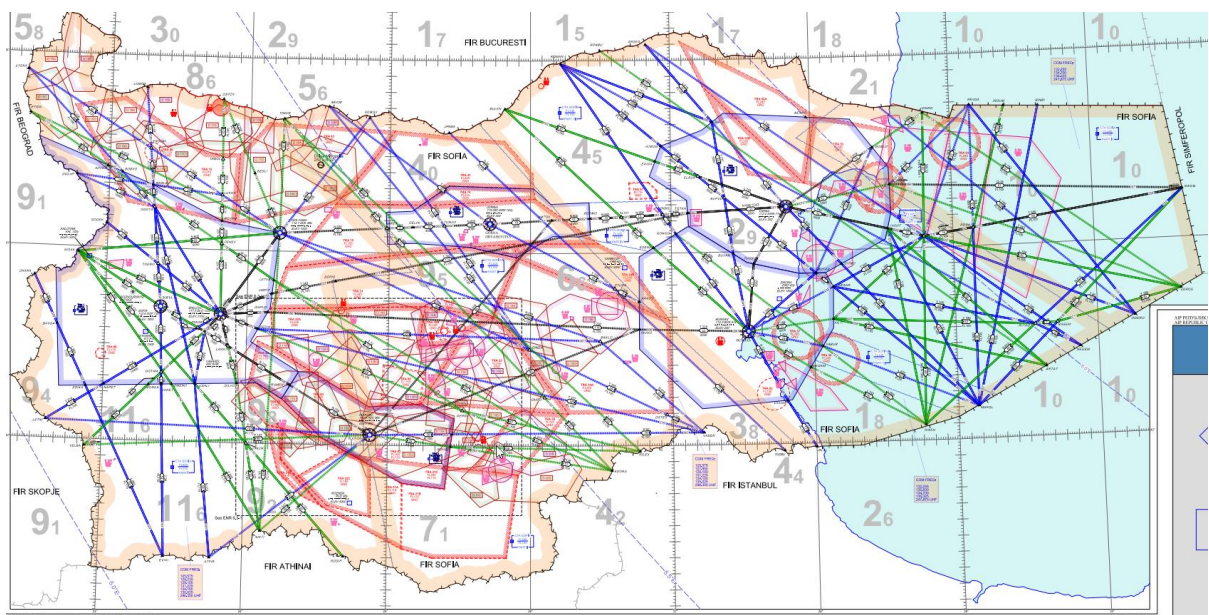
## Aim

The aim of this agreement is to define the hand-off and transfer regulations between Sofia ACC– Ankara ACC / Yesilkoy APP.

## List of stations

<b>SOFIA ACC</b>	<b>ANKARA ACC</b>	<b>YESILKOY APP</b>
LBSR_CTR – 131.225MHz	LTBB_N_CTR 119.300MHz	LTBA_APP 120.450MHz
LBSR_V_CTR 134.700MHz	LTBB_CTR 132.150MHz	LTBA_7_APP 121.250MHz WEST SECTOR (i.e RILEX1A)
-	LTAA_CTR 129.425MHz	LTBA_5_APP 132.775MHz EAST SECTOR (i.e RIXEN1A)

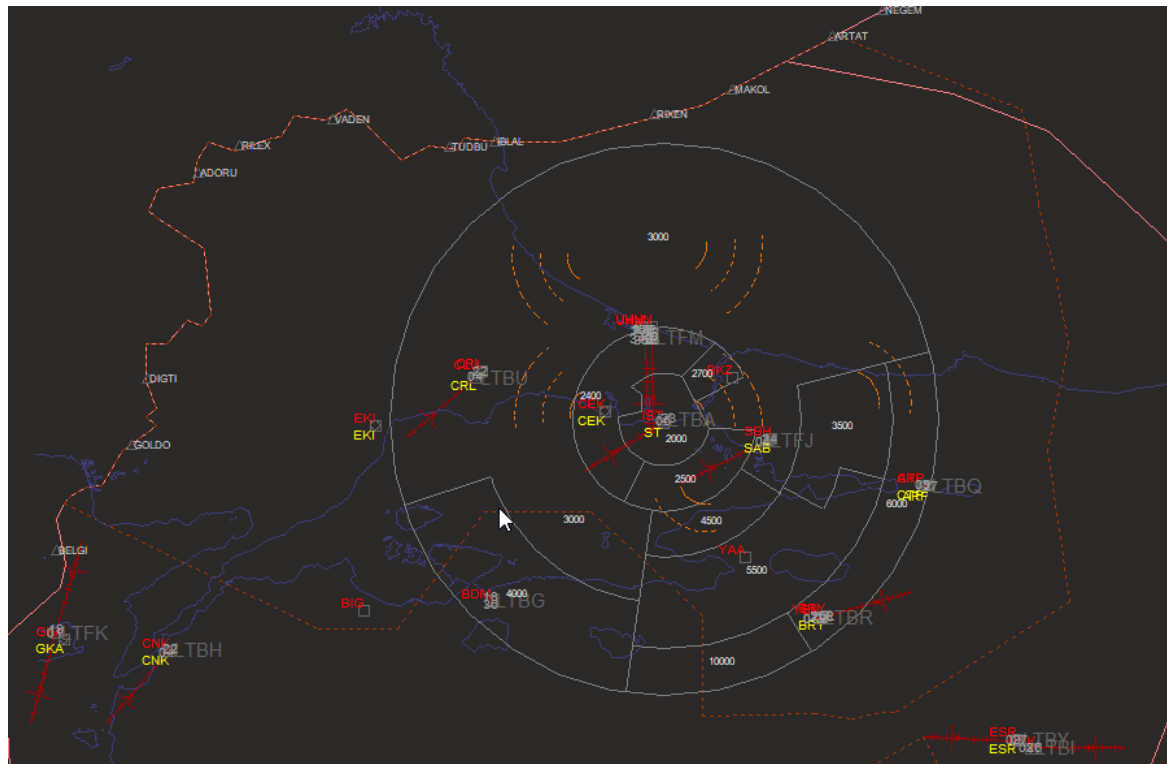
## 1. SOFIA ACC



## 2. ANKARA ACC



## 3. YESILKOY APP



## Coordination between Sofia ACC and Yesilkoy APP / Ankara ACC

- When both sides are online, Yesilkoy APP or Ankara ACC will inform Sofia ACC controller about the active runway configuration and the STAR's to be issued.
- Sofia ACC controller will clear the aircraft only for STAR's (only for LTFM) and descend accordingly.
- Sofia ACC controller will not issue a runway for any airport.
- If a traffic on Sofia ACC inbound Istanbul TMA requests descends on a STAR which does not have a defined restriction, they will be descended to FL250 or above until reaching Ankara ACC boundary.

### 1.LTFM ARRIVALS

#### 1.1 RILEX ARRIVALS

RWY CONFIG	STAR	LEVEL RESTRICTION	HANDOFF TO
NORTHERLY	RILEX1A	FL310 OR BELOW	ACC
SOUTHERLY	RILEX1B	FL270 OR BELOW	APP

#### 1.2 RIXEN ARRIVALS

RWY CONFIG	STAR	LEVEL RESTRICTION	HANDOFF TO
NORTHERLY	RIXEN1A	FL210 OR BELOW	APP
SOUTHERLY	RIXEN1B	FL190 OR BELOW	APP

*For tactical separation reasons traffics may be descended below defined levels for example FL310 to FL290, FL270 etc.*

### 2.LTFJ ARRIVALS

RWY CONFIG	STAR	LEVEL RESTRICTION	HANDOFF TO
NORTHERLY	ALL	-	ACC
SOUTHERLY	GINLIIG (RIXEN ENTRY)	DESCEND FL250	ACC
SOUTHERLY	OTHERS	-	ACC

### 3.LTBA ARRIVALS

RWY CONFIG	STAR	LEVEL RESTRICTION	HANDOFF TO
NORTHERLY	ATVEP1G (ADORU ENTRY)	FL230 OR BELOW AT ATVEP	ACC / OVER ADORU
NORTHERLY	GINLI1Q (RIXEN ENTRY)	FL230 OR BELOW AT GINLI	APP / OVER RIXEN
SOUTHERLY	ATVEP1R (ADORU ENTRY)	FL270 OR BELOW AT ATVEP	ACC / OVER ADORU
SOUTHERLY	GINLI1R (RIXEN ENTRY)	FL260 OR BELOW AT GINLI	ACC / OVER RIXEN

### 4.DEPARTURES

*YESILKOY APP* WILL TRANSFER

- TUDBU
- IBLAL
- VADEN
- MAKOL

DEPARTURES TO *SOFIA ACC* IF THEY CROSS THESE POINTS AT OR BELOW FL245. OTHERWISE THEY WILL BE HANDED OFF TO *ANKARA ACC*.

END

This Letter of Agreement (LoA) was made between Turkish vACC and Bulgarian vACC and have been agreed by both sides on 22.03.2021. This letter of agreement may be updated in the future if there happens to be changes.

BGvACC STAFF

TRvACC STAFF