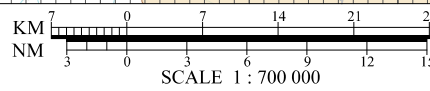
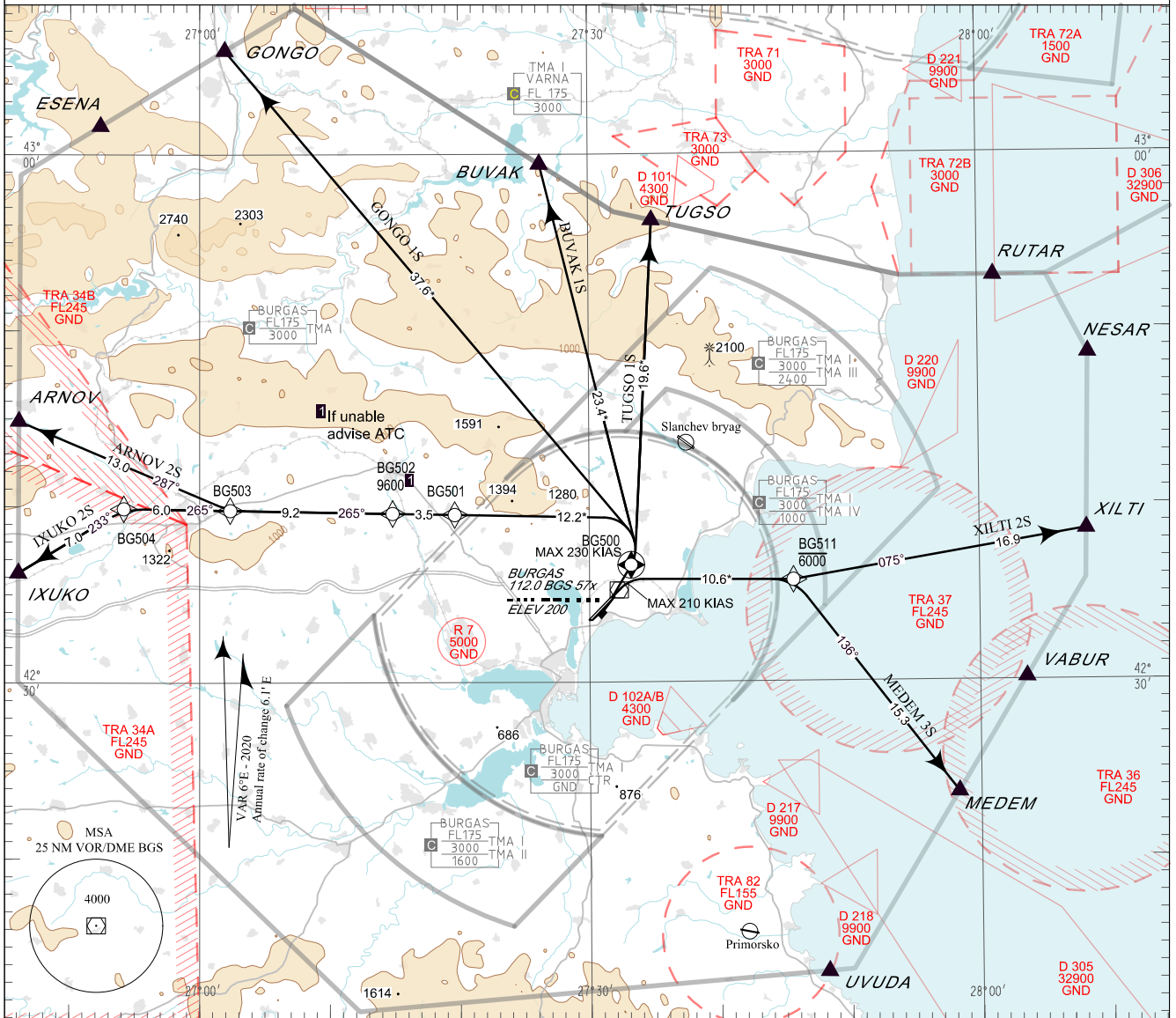


**STANDARD DEPARTURE CHART -
INSTRUMENT (SID) - ICAO**

TRANSITION ALT 10500 FT APP 125.100 TWR 118.000 ATIS 126.980
TRANSITION LEVEL BY ATC 119.650 120.000
378.350 336.400
121.500 121.500
243.000 243.000

**BURGAS
RNAV Rwy 04**

ARNOV 2S, BUVAK 1S, GONGO 1S,
IXUKO 2S, MEDEM 3S, TUGSO 1S,
XILTI 2S



PBN

RNAV 1
GNSS or DME/DME/IRU required.

Critical DME

EMO, VRB on ARNOV 2S, IXUKO 2S
BGS on BUVAK 1S, GONGO 1S
VRB, WRN on XILTI 2S

Non RNAV 1 ACFT:

Report "UNABLE RNAV" at first contact to ATC.
Expect OMNIDIRECTIONAL DEPARTURE and/
vectoring to be provided by ATC

AFTER TAKE-OFF:

Immediately contact BURGAS APP

Strict compliance with departure procedures is necessary. If
unable to comply inform ATC in good time so that alternative
clearance can be issued.

WARNING:

When given a clearance to a level higher than the specified in
the SID, follow published SID profile, unless restrictions are
explicitly cancelled by ATC.

Climb:

MNM climb gradient of 6% (365 FT/NM) to 4000 FT for
MEDEM 3S and XILTI 2S due to airspace restrictions.

MNM climb gradient of 5.5% (334 FT/NM) to 4000 FT for
GONGO 1S due to terrain.

MNM climb gradient of 5% (304 FT/NM) to 4000 FT for
ARNOV 2S, BUVAK 1S, IXUKO 2S and TUGSO 1S due to
airspace restrictions.

OMNIDIRECTIONAL DEPARTURE:

Climb straight ahead to 4000 FT, turn to the corresponding
point or as cleared by ATC
MNM climb gradient of 5% (304 FT/NM) to 4000 FT

P/T	WPT ID	Flyover	Track MAG (GEO)	DIST NM	Turn Direction	Speed KT	ALT FT	Additional requirements
ARNOV 2S ARNOV TWO SIERRA DEPARTURE								
<i>MNM climb gradient of 5% (304 FT/NM) to 4000FT AMSL.</i>								
CA	-	-	039°(044.4°T)	-	Left	230-	520+	-
DF	BG500	Yes	-	-	Left	-	-	-
DF	BG501	-	-	-	-	-	-	-
TF	BG502	-	265°(271.2°T)	3.5	-	-	-	Expected ALT 9600+ If unable to comply advise ATC
TF	BG503	-	265°(271.2°T)	9.2	Right	-	-	-
TF	ARNOV	-	287°(293.0°T)	13.0	-	-	-	-
BUVAK 1S BUVAK ONE SIERRA DEPARTURE								
<i>MNM climb gradient of 5% (304 FT/NM) to 4000FT AMSL.</i>								
CA	-	-	039°(044.4°T)	-	Left	230-	520+	-
DF	BG500	Yes	-	-	Left	-	-	-
DF	BUVAK	-	-	-	-	-	-	-
GONGO 1S GONGO ONE SIERRA DEPARTURE								
<i>MNM climb gradient of 5.5% (334 FT/NM) to 4000FT AMSL.</i>								
CA	-	-	039°(044.4°T)	-	Left	230-	520+	-
DF	BG500	Yes	-	-	Left	-	-	-
DF	GONGO	-	-	-	-	-	-	-
IXUKO 2S IXUKO TWO SIERRA DEPARTURE								
<i>MNM climb gradient of 5% (304 FT/NM) to 4000FT AMSL.</i>								
CA	-	-	039°(044.4°T)	-	Left	230-	520+	-
DF	BG500	Yes	-	-	Left	-	-	-
DF	BG501	-	-	-	-	-	-	-
TF	BG502	-	265°(271.2°T)	3.5	-	-	-	Expected ALT 9600+ If unable to comply advise ATC
TF	BG503	-	265°(271.2°T)	9.2	-	-	-	-
TF	BG504	-	265°(271.0°T)	6.0	Left	-	-	-
TF	IXUKO	-	233°(238.8°T)	7.0	-	-	-	-

P/T	WPT ID	Flyover	Track MAG (GEO)	DIST NM	Turn Direction	Speed KT	ALT FT	Additional requirements
MEDEM 3S MEDEM THREE SIERRA DEPARTURE								
<i>MNM climb gradient of 6% (365 FT/NM) to 4000FT AMSL.</i>								
CA	-	-	039°(044.4°T)	-	Right	210-	1600+	-
DF	BG511	-	-	-	Right	-	6000-	-
TF	MEDEM	-	136°(142.2°T)	15.3	-	-	-	-
TUGSO 1S TUGSO ONE SIERRA DEPARTURE								
<i>MNM climb gradient of 5% (304 FT/NM) to 4000FT AMSL.</i>								
CA	-	-	039°(044.4°T)	-	Left	230-	520+	-
DF	BG500	Yes	-	-	Left	-	-	-
DF	TUGSO	-	-	-	-	-	-	-
XILTI 2S XILTI TWO SIERRA DEPARTURE								
<i>MNM climb gradient of 6% (365 FT/NM) to 4000FT AMSL.</i>								
CA	-	-	039°(044.4°T)	-	Right	210-	1600+	-
DF	BG511	-	-	-	Left	-	6000-	-
TF	XILTI	-	075°(080.3°T)	16.9	-	-	-	-

See page LBBG AD 2 - 61.1 for waypoint coordinates

INTENTIONALLY LEFT BLANK