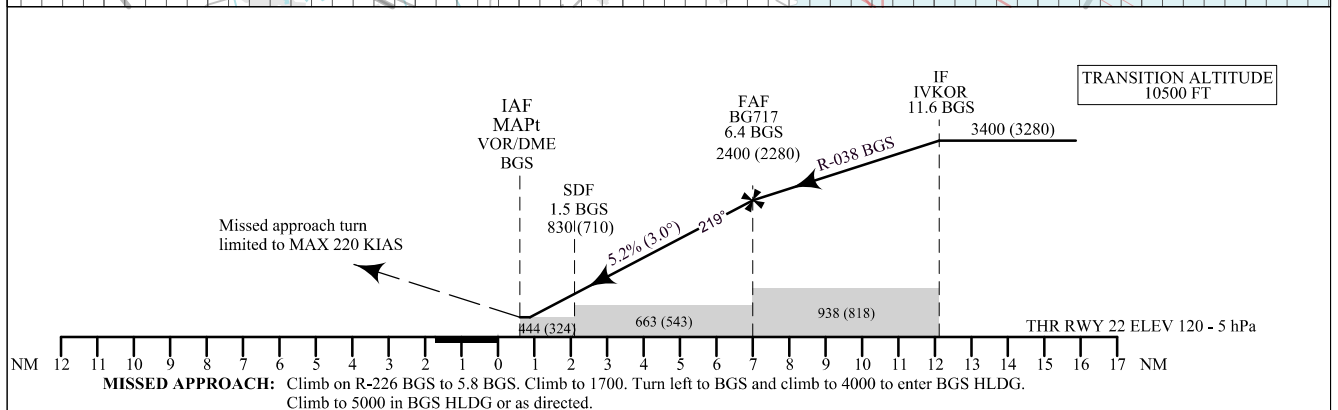
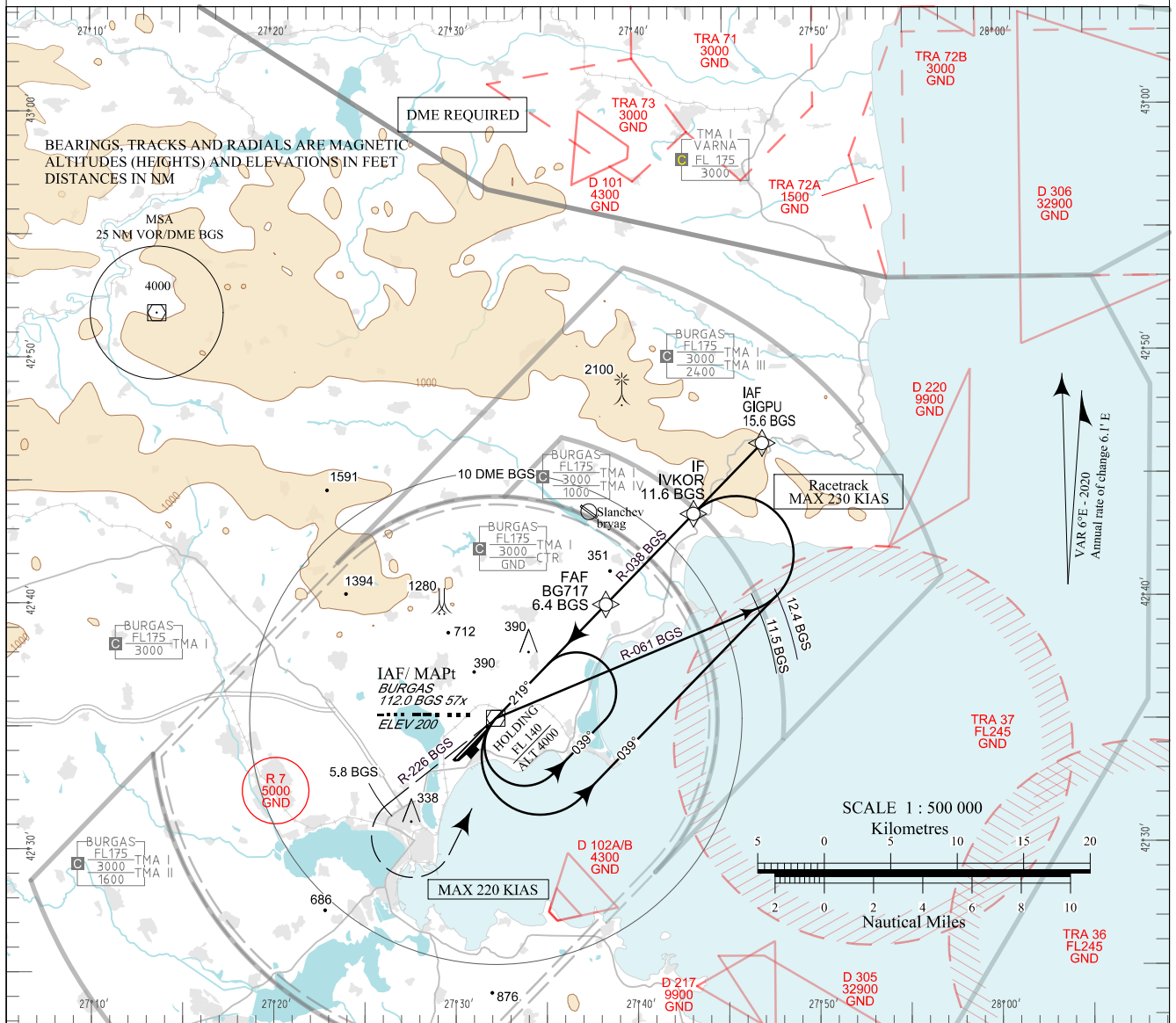


**INSTRUMENT
APPROACH
CHART - ICAO**

AERODROME ELEV 135 - 5 hPa
THR RWY 22 ELEV 120 - 5 hPa
OCH RELATED TO THR RWY 22 ELEV
CIRCLING OCH RELATED TO AD ELEV

APP 125.100 TWR 118.000 ATIS 126.980
119.650 120.000
378.350 336.400
121.500 121.500
243.000 243.000

**BURGAS
VOR
RWY 22**



OCA (OCH)		A	B	C	D	DME BGS NM / km	6.0 / 11.1	5.0 / 9.3	4.0 / 7.4	3.0 / 5.6	2.0 / 3.7	1.0 / 1.9
Straight-in Approach	m		140 (100)			DIST THR NM / km	6.6 / 12.2	5.6 / 10.3	4.6 / 8.5	3.6 / 6.6	2.6 / 4.8	1.6 / 2.9
	ft		450 (330)			ALT (HGT) m	690 (655)	595 (555)	495 (460)	400 (360)	300 (265)	205 (170)
SDF not received	m		205 (170)			ALT (HGT) ft	2260 (2140)	1940 (1820)	1630 (1510)	1310 (1190)	990 (870)	670 (550)
	ft		670 (550)									
Circling	m	185 (145)	220 (180)	350 (310)	515 (475)							
	ft	600 (470)	700 (570)	1150 (1020)	1680 (1550)							

	GS	kt	60	80	100	120	140	160	180
FAF - MAPt 6.4 NM	min:sec	6:26	4:49	3:52	3:13	2:45	2:25	2:09	
Rate of descent	ft/min	318	425	531	637	743	849	955	

Timing is not authorized for defining MAPt

| See pages LBBG AD 2 - 61.1 and LBBG AD 2 - 61.2 for non-RNAV fixes coordinates and other data.