

**VISUAL APPROACH
CHART - ICAO**

AD ELEV 135 ft
ARP 42 34 13 N 027 30 55 E

VASIS
RWY 04 - PAPI 3.0° MEHT 50 DUAL
RWY 22 - PAPI 3.0° MEHT 50 DUAL

TRANSITION ALT 10500 FT
TRANSITION LEVEL BY ATC

APP	125.100	TWR	118.000	ATIS	126.980
	119.650		120.000		
	378.350		336.400		
	121.500		121.500		
	243.000		243.000		

**BURGAS
VFR ROUTES**

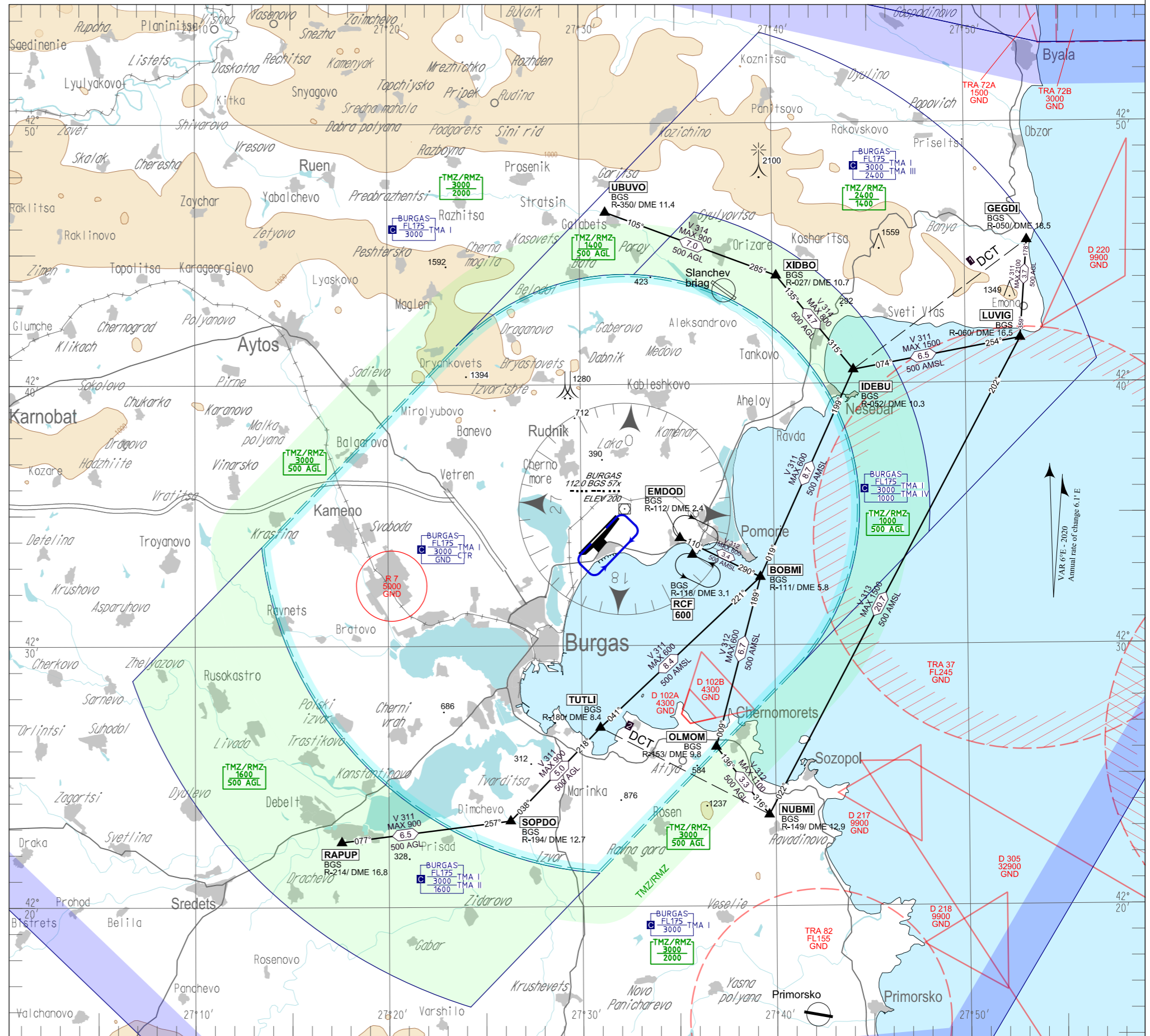
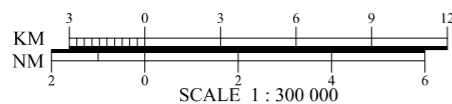
- VFR RCF PROCEDURE BURGAS:
1. SQUAWK 7600.
 2. Leave Burgas CTR strictly following the published routes
 3. Proceed to a different AD.
 3. If flying to a different AD is considered unsafe proceed via the established routes to BOBMI and then enter RCF holding.
 4. Flash LDG LGT and watch TWR for visual signals.

These procedures are provided for aircraft with MTOW up to 5700 kg.

Aircraft must not leave the confines of 2.0 km (1.1 NM) on each side of the track without prior coordination with ATC.

- In case of LBTRA37 activation, VFR flights between NUBMI - LUVIG and IDEBU - LUVIG are prohibited. Circumnavigation of LBTRA37 may be planned via IDEBU DCT GEGDI at 1700 ft AMSL or below.
- In case of LBD102B activation, VFR flights between OLMOM - BOBMI are prohibited. Circumnavigation of LBD102B may be planned via NUBMI DCT TUTLI at 1300 ft AMSL or below.

BEARINGS, TRACKS AND RADIALS ARE MAGNETIC
ALTITUDES (HEIGHTS) AND ELEVATIONS IN FEET
DISTANCES IN NM



INTENTIONALLY LEFT BLANK

Маршрути за полети по правилата за визуални полети
Visual Flight Rules (VFR) Routes

Route designator Name of significant points Coordinates	Waypoint IDENT of VOR/DME BRG & DIST km (NM) ELEV DME Antenna m (ft)	MAG BRG Geodesic DIST km (NM)	Upper Limits Lower Limits		Lateral Limits	Direction of cruising levels		Remarks Controlling unit Frequency
			Airspace classification			Odd	Even	
1	2	3	4		5	6		7
V311	Total DIST km (NM) 71.9 (38.8)							
▲ RAPUP (factory SE of town Debel) 422229N 0271734E	BGS 215° 31.0 (16.8) 60 (200)	077°/257° 12.1 (6.5)	900FT 500FT AGL Class C		2.2NM	↓		SSR transponder and continuous two-way air-ground communication required. AVBL ABV upper limit after coordination with respective ATS unit. Burgas APP: 125.100 MHz, 119.650 MHz, 378.350 MHz Burgas TWR: 118.000 MHz, 120.000 MHz, 336.400 MHz FIC Sofia: 130.600 MHz
▲ SOPDO (SW of village Marinka) 422318N 0272617E	BGS 195° 23.6 (12.7) 60 (200)							
▲ TUTLI (N of fishing village) 422652N 0273057E	BGS 181° 15.6 (8.4) 60 (200)	041°/221° 15.6 (8.4)	2.2NM					
▲ BOBMI (E of town Pomorie) 423236N 0273917E	BGS 111° 10.7 (5.8) 60 (200)				019°/199° 16.1 (8.7)	2.2NM		
▲ IDEBU (N of town Nesebar) 424032N 0274411E	BGS 053° 19.0 (10.3) 60 (200)	074°/254° 12.0 (6.5)	1500FT 1000FT AMSL Class C	1000FT 500FT AMSL Class G				
▲ LUVIG (cape Emine) 424143N 0275251E	BGS 061° 30.6 (16.5) 60 (200)		359°/178° 6.9 (3.7)	2100FT 500FT AGL Class G		2.2NM		
▲ GEGDI (beach Irakli) 424527N 0275314E	BGS 051° 34.3 (18.5) 60 (200)							
Note: ▲ - Compulsory △ - On- request								

Route designator Name of significant points Coordinates	Waypoint IDENT of VOR/DME BRG & DIST km (NM) ELEV DME Antenna m (ft)	MAG BRG Geodesic DIST km (NM)	Upper Limits Lower Limits		Lateral Limits	Direction of cruising levels		Remarks Controlling unit Frequency
			Airspace classification			Odd	Even	
1	2	3	4		5	6		7
V312	Total DIST km (NM) 25 (13.4)							
▲ NUBMI (village Ravadinovo) 422330N 0273940E	BGS 149° 24.0 (12.9) 60 (200)	316°/136° 6.1 (3.3)	1100FT 500FT AGL Class G		2.2NM	↑ ↓		SSR transponder and continuous two-way air-ground communication required. AVBL ABV upper limit after coordination with respective ATS unit. Burgas APP: 125.100 MHz, 119.650 MHz, 378.350 MHz Burgas TWR - 118.000 MHz, 120.000 MHz, 336.400 MHz FIC Sofia: 130.600 MHz
▲ OLMOM (W of town Chernomorets) 422606N 0273656E	BGS 154° 18.1 (9.8) 60 (200)							
▲ BOBMI (E of town Pomorie) 423236N 0273917E	BGS 111° 10.7 (5.8) 60 (200)	290°/110° 6.4(3.4)	600FT 500FT AMSL Class C		2.2NM	↑ ↓		
▲ EMDOD (W of town Pomorie) 423407N 0273507E	BGS 112° 4.4 (2.4) 60 (200)							
Note: ▲ - Compulsory △ - On- request								

Маршрути за полети по правилата за визуални полети
Visual Flight Rules (VFR) Routes

Route designator Name of significant points Coordinates	Waypoint IDENT of VOR/DME BRG & DIST km (NM) ELEV/DME Antenna m (ft)	MAG BRG Geodesic DIST km (NM)	Upper Limits Lower Limits Airspace classification	Lateral Limits	Direction of cruising levels		Remarks Controlling unit Frequency
					Odd	Even	
1	2	3	4	5	6		7
V313	Total DIST km (NM) 38.3 (20.7)						SSR transponder and continuous two-way air-ground communication required. AVBL ABV upper limit after coordination with respective ATS unit. Burgas APP: 125.100 MHz, 119.650 MHz, 378.350 MHz Burgas TWR - 118.000 MHz, 120.000 MHz, 336.400 MHz FIC Sofia: 130.600 MHz
▲ NUBMI (village Ravadinovo) 422330N 0273940E	BGS 149° 24.0 (12.9) 60 (200)	022°/202° 38.3 (20.7)	1500FT 1000FT AMSL Class C	1000FT 500FT AMSL Class G	2.2NM	↑	
▲ LUVIG (cape Emine) 424143N 0275251E	BGS 061° 30.6 (16.5) 60 (200)		↓				
Note: ▲ - Compulsory △ - On-request							

Route designator Name of significant points Coordinates	Waypoint IDENT of VOR/DME BRG & DIST km (NM) ELEV/DME Antenna m (ft)	MAG BRG Geodesic DIST km (NM)	Upper Limits Lower Limits Airspace classification	Lateral Limits	Direction of cruising levels		Remarks Controlling unit Frequency
					Odd	Even	
1	2	3	4	5	6		7
V314	Total DIST km (NM) 21.5 (11.7)						SSR transponder and continuous two-way air-ground communication required. AVBL ABV upper limit after coordination with respective ATS unit. Burgas APP: 125.100 MHz, 119.650 MHz, 378.350 MHz Burgas TWR - 118.000 MHz, 120.000 MHz, 336.400 MHz FIC Sofia: 130.600 MHz
▲ UBUVO (village Galabets) 424636N 0273120E	BGS 351° 21.1 (11.4) 60 (200)	105°/285° 12.9 (7.0)	900FT 500FT AGL Class G	2.2NM	↑		
▲ XIDBO (2.5km SW of village Kosharitsa) 424409N 0274012E	BGS 027° 19.7 (10.7) 60 (200)		800FT 500FT AGL Class G				
▲ IDEBU (N of town Nesebar) 424032N 0274411E	BGS 053° 19.0 (10.3) 60 (200)	135°/315° 8.6 (4.7)		2.2NM	↓		
Note: ▲ - Compulsory △ - On-request							