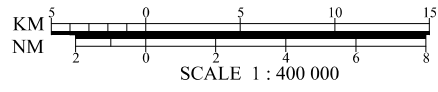
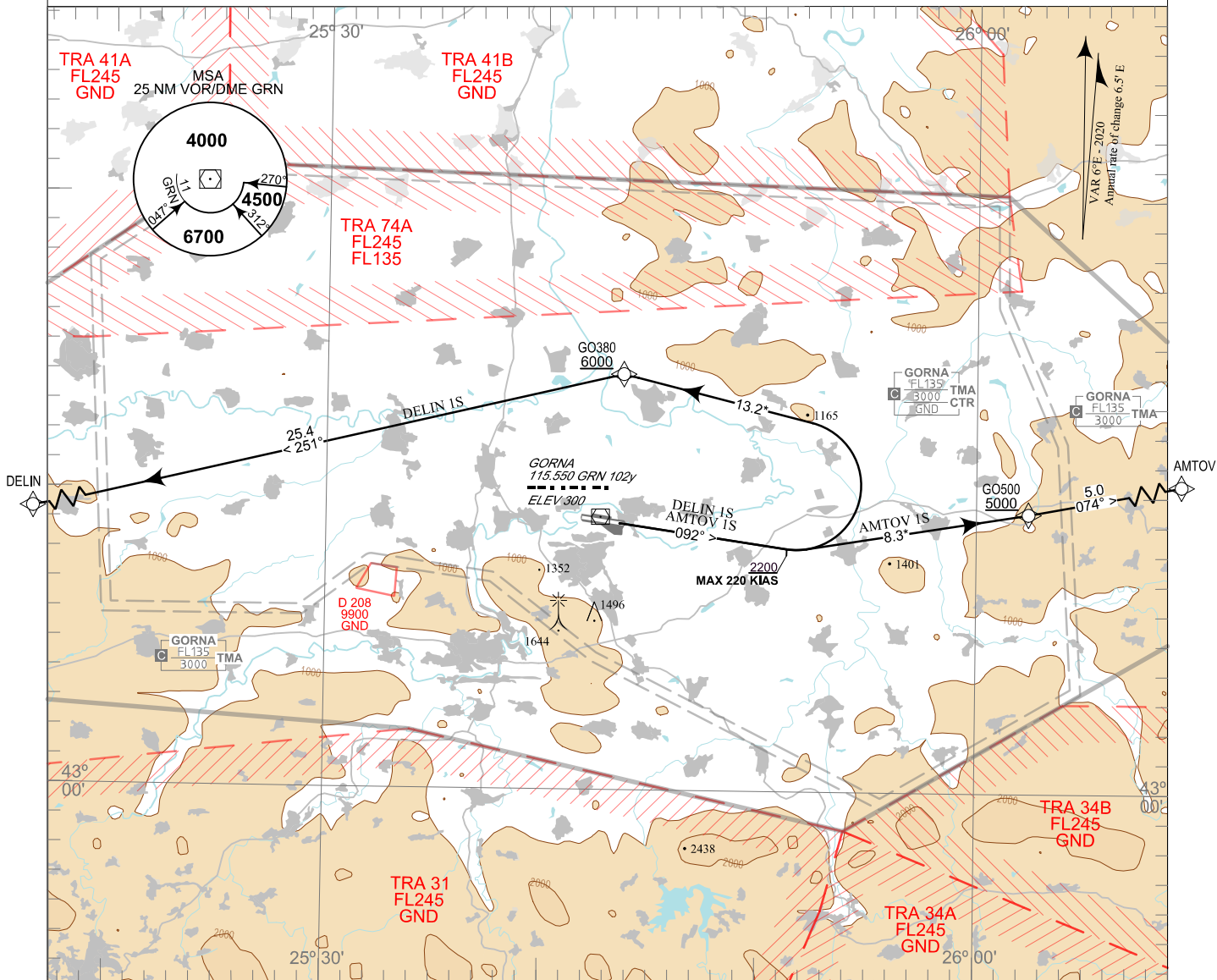


TRANSITION ALT 10500 FT TWR 133.500 ATIS 127.130
TRANSITION LEVEL BY ATC 124.500
246.825
121.500
243.000

**GORNA ORYAHOVITSA
RNAV RWY 09**

AMTOV IS, DELIN IS

**STANDARD DEPARTURE CHART -
INSTRUMENT (SID) - ICAO**



ALTITUDES (HEIGHTS) AND ELEVATIONS IN FEET
DISTANCES IN NM
Distances marked by * are approximate distances from DER

Certification:

RNAV 1 certification based on GNSS is required for the RNAV departure procedures

Non RNAV 1 ACFT:

Report "UNABLE RNAV" at first contact to ATC.
Expect OMNIDIRECTIONAL DEPARTURE and/ or instructions provided by ATC

AFTER TAKE-OFF:

Strict compliance with departure procedures is necessary. If unable to comply inform ATC in good time so that alternative clearance can be issued.

WARNING:

When given a clearance to a level higher than the specified in the SID, follow published SID profile, unless restrictions are explicitly cancelled by ATC.

ROUTES:

Follow the coding on the verso of the chart.

OMNIDIRECTIONAL DEPARTURE:

Climb on track 081° to 2200 FT.
Turn LEFT to DELIN or AMTOV according to FPL.
MNM climb gradient of 5.5% (344 FT/NM) required due airspace restrictions.
MAX 220 KIAS.

P/T	WPT ID	Flyover	Track MAG (GEO)	DIST NM	Turn Direction	Speed KT	ALT FT	Additional Requirements
AMTOV 1S AMTOV ONE SIERRA DEPARTURE								
<i>MNM climb gradient of 5.5% (344 FT/NM) to 5000FT AMSL.</i>								
CA	-	-	092°(098.0°T)	-	Left	-	2200+	-
DF	GO500	-	-	-	-	220-	5000+	-
TF	AMTOV	-	074°(079.5°T)	5.0	-	-	-	-
DELIN 1S DELIN ONE SIERRA DEPARTURE								
<i>MNM climb gradient of 5.5% (344 FT/NM) to 8000FT AMSL.</i>								
CA	-	-	092°(098.0°T)	-	Left	-	2200+	-
DF	GO380	-	-	-	Left	220-	6000+	-
TF	DELIN	-	251°(256.2°T)	25.4	-	-	-	-

See page LBGO AD 2 - 61.1 for waypoint coordinates