

**INSTRUMENT
APPROACH
CHART - ICAO**

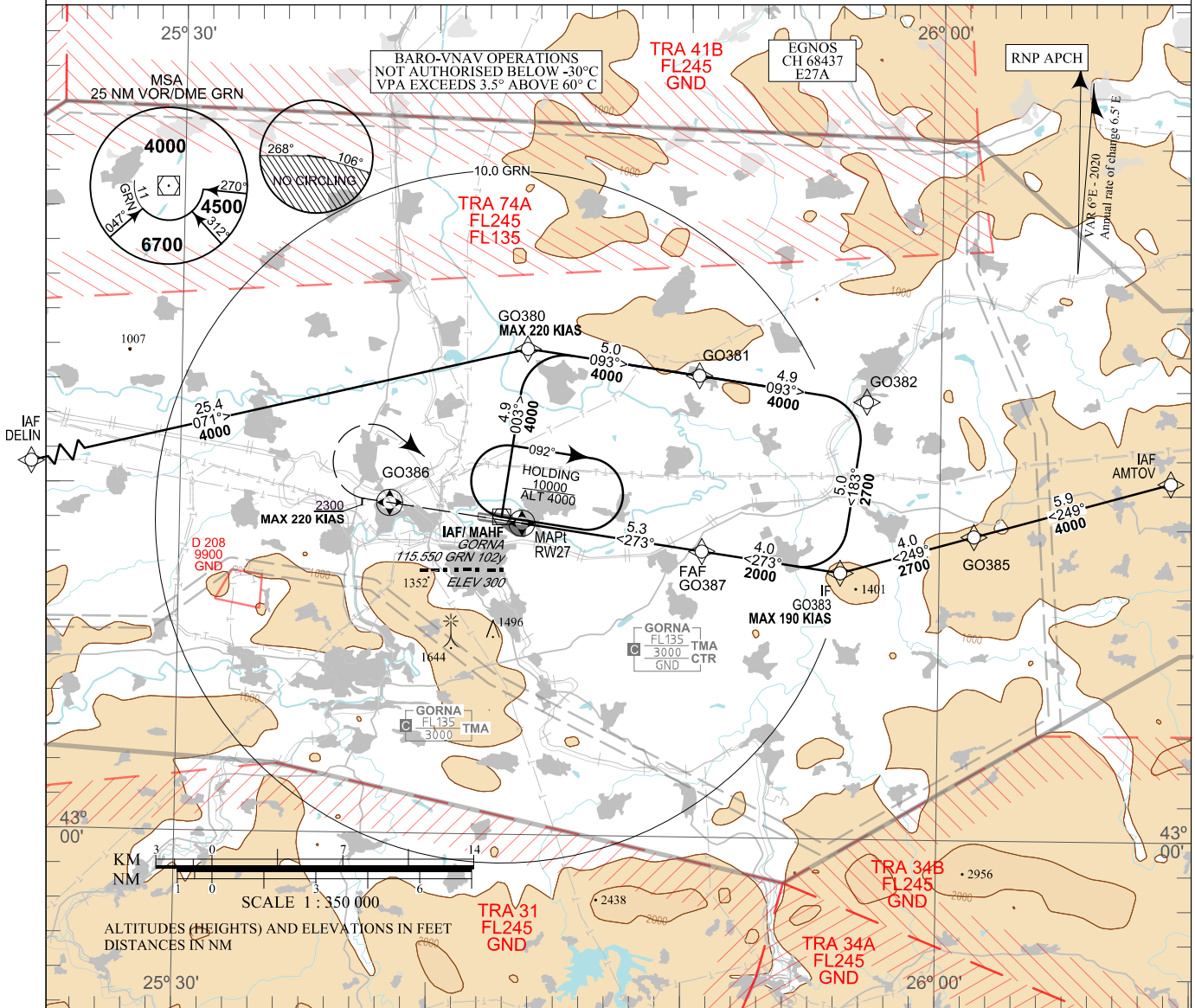
AERODROME ELEV 283 - 10 hPa
THR RWY 27 ELEV 275 - 10 hPa
OCH RELATED TO THR RWY 27 ELEV
CIRCLING OCH RELATED TO AD ELEV

TWR 133.500
124.500
246.825
121.500
243.000

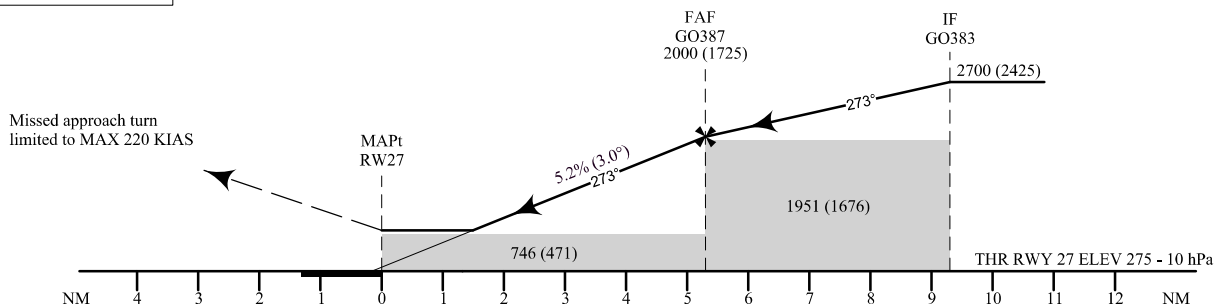
ATIS 127.130

GORNA ORYAKHOVITSA

**RNP
RWY 27**



TRANSITION ALTITUDE
10500 FT



MISSED APPROACH: Climb to GO386. Climb to 2300 FT. Turn right to GRN climbing 4000 FT and hold.

OCA (OCH)		A	B	C	D
LPV	m	145 (61)	149 (65)	151 (67)	154 (71)
	ft	474 (199)	486 (211)	494 (219)	505 (230)
LNAV/VNAV	Missed APCH gradient 2.5%	m 230 (145)	235 (150)	240 (155)	250 (170)
	ft	750 (480)	760 (490)	780 (510)	820 (550)
LNAV	Missed APCH gradient 3.6%	m 190 (105)	195 (110)	200 (115)	215 (130)
	ft	620 (350)	630 (360)	650 (380)	690 (420)
Circling N of AD only	m	270 (185)	285 (200)	321 (235)	321 (235)
	ft	890 (600)	940 (650)	1060 (780)	1060 (780)

DIST THR NM / km	5 / 9.3	4 / 7.4	3 / 5.6	2 / 3.7
ALT (HGT) m	580 (495)	485 (400)	390 (305)	290 (210)
ALT (HGT) ft	1910 (1630)	1590 (1310)	1270 (1000)	960 (680)

GS	kt	60	80	100	120	140	160	180
FAF - MAPt 5.3 NM	min:sec	5:18	3:59	3:11	2:39	2:16	1:59	1:46
Rate of descent	ft/min	316	421	527	632	737	843	948

Timing is not authorized for defining MAPt

Instrument approach procedures

P/T	WPT ID	Flyover	Track MAG (GEO)	DIST NM	Turn Direction	Speed KT	ALT FT
From IAF AMTOV							
IF	AMTOV / IAF	-	-	-	-	-	-
TF	GO385	-	249°(254.5°T)	5.9	-	-	4000+
TF	GO383 / IF	-	249°(254.4°T)	4.0	Right	190-	2700+
TF	GO387 / FAF	-	273°(278.2°T)	4.0	-	-	2000+
TF	RW27 / MAPt	Yes	273°(278.2°T)	5.3	-	-	-
DF	GO386	Yes	-	-	-	-	-
CA	-	-	273°(278.1°T)	-	Right	220-	2300+
DF	GRN / MAHF	-	-	-	-	-	4000
From IAF DELIN							
IF	DELIN / IAF	-	-	-	-	-	-
TF	GO380	-	071°(076.2°T)	25.4	Right	220-	-
TF	GO381	-	093°(098.2°T)	5.0	-	-	-
TF	GO382	-	093°(098.2°T)	4.9	Right	-	4000+
TF	GO383 / IF	-	183°(188.2°T)	5.0	Right	190-	2700+
TF	GO387 / FAF	-	273°(278.2°T)	4.0	-	-	2000+
TF	RW27 / MAPt	Yes	273°(278.2°T)	5.3	-	-	-
DF	GO386	Yes	-	-	-	-	-
CA	-	-	273°(278.1°T)	-	Right	220-	2300+
DF	GRN / MAHF	-	-	-	-	-	4000
From IAF GRN							
IF	GRN / IAF	-	-	-	-	-	-
TF	GO380	-	003°(008.1°T)	4.9	Right	220-	-
TF	GO381	-	093°(098.2°T)	5.0	-	-	-
TF	GO382	-	093°(098.2°T)	4.9	Right	-	4000+
TF	GO383 / IF	-	183°(188.2°T)	5.0	Right	190-	2700+
TF	GO387 / FAF	-	273°(278.2°T)	4.0	-	-	2000+
TF	RW27 / MAPt	Yes	273°(278.2°T)	5.3	-	-	-
DF	GO386	Yes	-	-	-	-	-
CA	-	-	273°(278.1°T)	-	Right	220-	2300+
DF	GRN / MAHF	-	-	-	-	-	4000

Holding

P/T	WPT ID	Flyover	Track MAG (GEO)	Time	Turn Direction	Speed KT	ALT FT
HM	GRN	Yes	272°(278.0°T)	1 min	Right	220-	4000+ 10000-

See page LBGO AD 2 - 61.1 for waypoint coordinates

SBAS FAS Data Block Gorna Oryahovitsa RWY 27

Data Field	Data Value
Operation Type	0
SBAS Provider	1 (EGNOS)
Airport Identifier	LBGO
Runway	27
Runway Letter	0 (None)
Approach Performance Designator	0
Route Indicator	
Reference Path Data Selector	0
Reference Path Identifier	E27A
LTP/FTP Latitude	430900.5000N
LTP/FTP Longitude	0254331.2750E
LTP/FTP Ellipsoidal Height (m)	124.6
FPAP Latitude	430910.7090N
Delta FPAP Latitude (seconds)	10.2090
FPAP Longitude	0254152.8140E
Delta FPAP Longitude (seconds)	-98.4610
Threshold Crossing Height (ft)	50.0
TCH Units Selector	0 (feet)
Glidepath Angle (degrees)	3.00
Course Width (m)	105.00
Length Offset (m)	0
HAL (m)	40.0
VAL (m)	50.0
CRC Value	25112D41
Data Block Hexadecimal Representation	10 0F 07 02 0C 1B 00 00 01 37 32 05 A8 9D 84 12 96 45 0A 0B DE 18 C2 4F 00 C6 FE FC F4 01 2C 01 64 00 C8 FA 25 11 2D 41

Required Additional Data (not CRC wrapped)

Data Field	Data Value
ICAO Code	LB
LTP/FTP Orthometric Height (m)	83.9

INTENTIONALLY LEFT BLANK