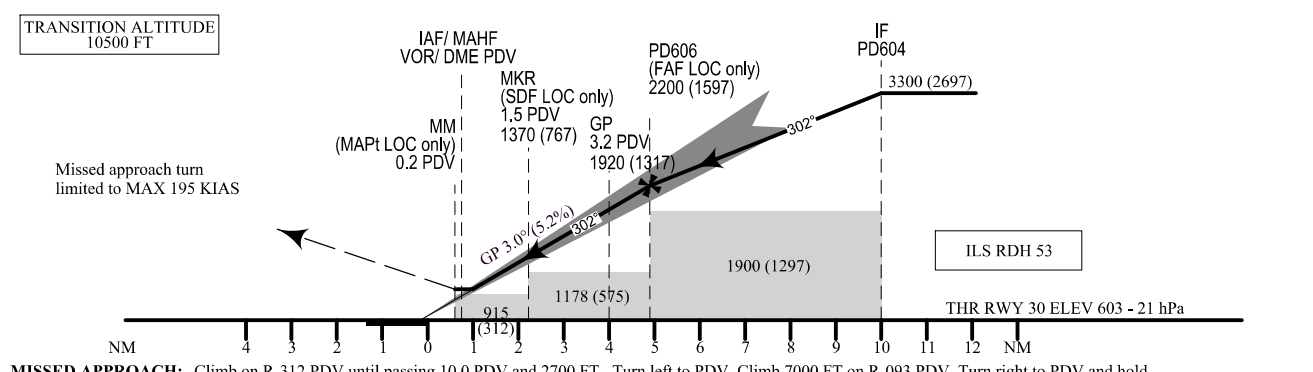
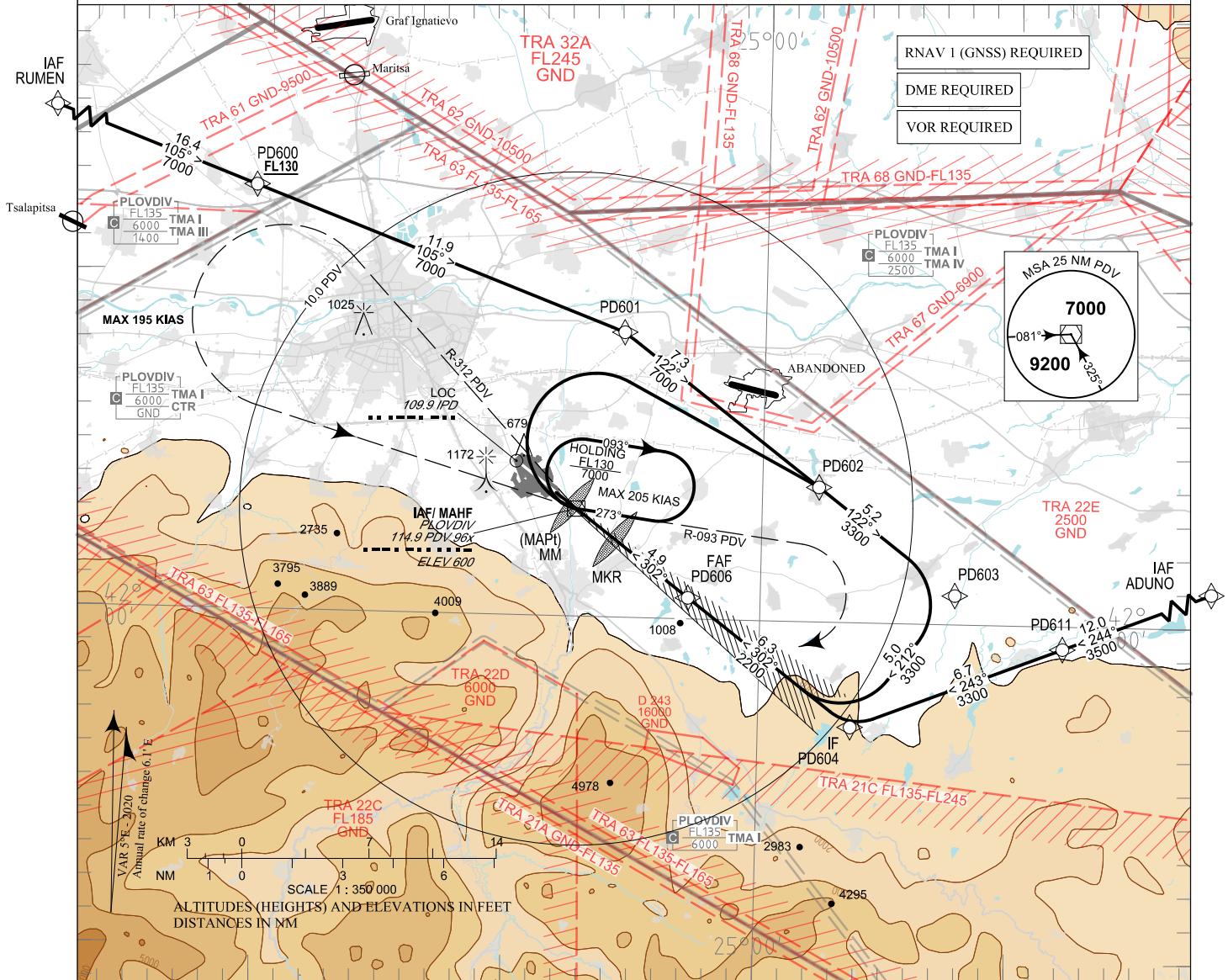
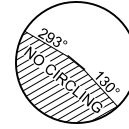


**INSTRUMENT
APPROACH
CHART - ICAO**

AERODROME ELEV 603 - 21 hPa TWR 133.600 ATIS 127.205
THR RWY 30 ELEV 603 - 21 hPa 125.500 362.550
OCH RELATED TO THR RWY 30 ELEV 121.500
CIRCLING OCH RELATED TO AD ELEV 243.000

PLOVDIV
**ILS x or LOC x
RWY 30**



MISSED APPROACH: Climb on R-312 PDV until passing 10.0 PDV and 2700 FT. Turn left to PDV. Climb 7000 FT on R-093 PDV. Turn right to PDV and hold.

OCA (OCH)	A	B	C	D
ILS	m 304 (130)	317 (133)	320 (136)	323 (139)
Missed APCH gradient 2.5%	ft 1030 (426)	1040 (436)	1050 (446)	1060 (456)
ILS	m 235 (51)	238 (54)	241 (57)	244 (60)
Missed APCH gradient 3.5%	ft 771 (167)	781 (177)	791 (187)	801 (197)
LOC only	m 300 (115)	970 (370)	420 (235)	1370 (770)
SDF not received	m 300 (115)	970 (370)	420 (235)	1370 (770)
Circling NE of AD only	m 310 (125)	340 (155)	430 (250)	1010 (410)
	ft 1010 (410)	1110 (510)	1410 (810)	

DIST PDV NM / km	4.0 / 7.4	3.0 / 5.6	2.0 / 3.7	1.0 / 1.9
DIST THR NM / km	4.8 / 8.8	3.8 / 6.9	2.8 / 5.1	1.8 / 3.2
ALT (HGT) m	660 (475)	565 (380)	470 (285)	375 (190)
ALT (HGT) ft	2170 (1570)	1860 (1250)	1540 (930)	1230 (620)

GS	kt	60	80	100	120	140	160	180
FAF - MAPt 4.4 NM	min:sec	4:16	3:18	2:38	2:12	1:53	1:39	1:28
Rate of descent	ft/min	316	421	527	632	737	843	948

Timing is not authorized for defining MAPt

Instrument approach procedures

P/T	WPT ID	Flyover	Track MAG (GEO)	DIST NM	Turn Direction	Speed KT	ALT / FL FT
From IAF RUMEN							
IF	RUMEN / IAF	-	-	-	-	-	-
TF	PD600	-	105°(110.2°T)	16.4	-	-	F130+
TF	PD601	-	105°(110.5°T)	11.9	Right	-	-
TF	PD602	-	122°(127.3°T)	7.3	-	-	A7000+
TF	PD603	-	122°(127.4°T)	5.2	Right	-	-
TF	PD604 / IF	-	212°(217.4°T)	5.0	Right	190-	A3300+
TF	PD606 / FAF	-	302°(307.4°T)	6.3	-	-	A2200+
FINAL APPROACH: ILS or LOC							
MISSED APPROACH: Climb on R-312 PDV until passing 10.0 PDV and 2700FT. Turn left to PDV. Climb 7000FT on R-093 PDV. Turn right to PDV and hold.							
From IAF ADUNO							
IF	ADUNO / IAF	-	-	-	-	-	-
TF	PD611	-	244°(249.0°T)	12.0	-	-	A3500+
TF	PD604 / IF	-	243°(248.8°T)	6.7	Right	190-	A3300+
TF	PD606 / FAF	-	302°(307.4°T)	6.3	-	-	A2200+
FINAL APPROACH: ILS or LOC							
MISSED APPROACH: Climb on R-312 PDV until passing 10.0 PDV and 2700FT. Turn left to PDV. Climb 7000FT on R-093 PDV. Turn right to PDV and hold.							
From IAF PDV							
IF	PDV / IAF	Yes	-	-	-	-	-
DF	PD602	-	-	-	Right	-	A7000+
TF	PD603	-	122°(127.4°T)	5.2	Right	-	-
TF	PD604 / IF	-	212°(217.4°T)	5.0	Right	190-	A3300+
TF	PD606 / FAF	-	302°(307.4°T)	6.3	-	-	A2200+
FINAL APPROACH: ILS or LOC							
MISSED APPROACH: Climb on R-312 PDV until passing 10.0 PDV and 2700FT. Turn left to PDV. Climb 7000FT on R-093 PDV. Turn right to PDV and hold.							

Holding

P/T	WPT ID	Flyover	Track MAG (GEO)	Time	Turn Direction	Speed KT	ALT / FL FT
HM	PDV	Yes	273°(277.8°T)	1min	Right	-	A7000+

See page LBDP AD 2 - 61.1 for waypoint coordinates