

**VISUAL APPROACH
CHART - ICAO**

AERODROME ELEV 603 - 21 hPa
ARP 42 04 04 N 24 51 03 E

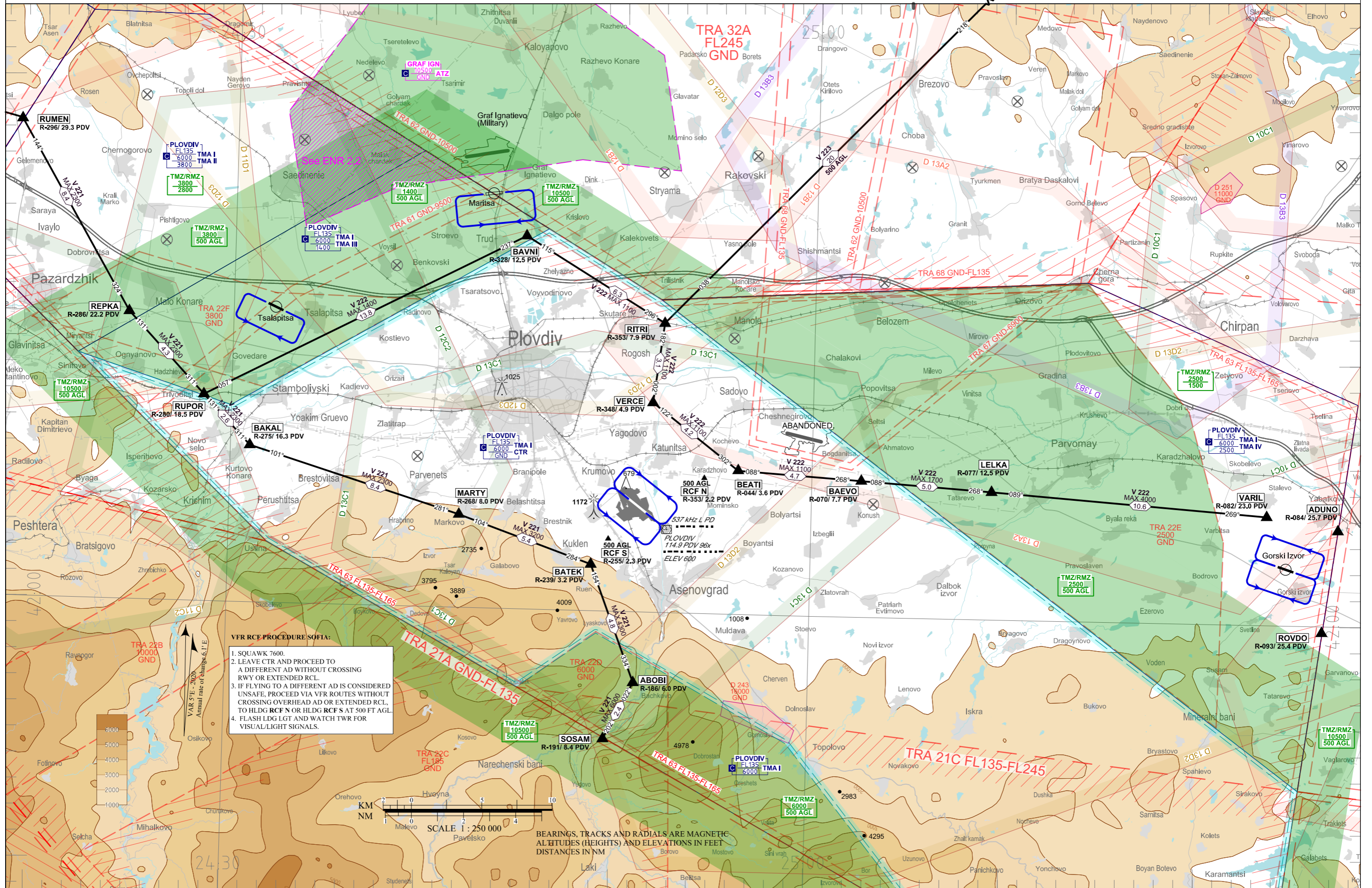
VASIS
RWY 12 - PAPI 3.0° MEHT 52 DUAL
RWY 30 - PAPI 3.0° MEHT 52 DUAL

TRANSITION ALT 10500 FT
TRANSITION LEVEL BY ATC

FIC 130.600

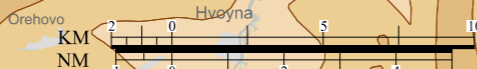
TWR 133.600 362.550 ATIS 127.205
125.500 243.000

**PLOVDIV
VFR ROUTES**



VFR RCF PROCEDURE SOFIA:

1. SQUAWK 7600.
2. LEAVE CTR AND PROCEED TO A DIFFERENT AD WITHOUT CROSSING RWY OR EXTENDED RCL.
3. IF FLYING TO A DIFFERENT AD IS CONSIDERED UNSAFE, PROCEED VIA VFR ROUTES WITHOUT CROSSING OVERHEAD AD OR EXTENDED RCL, TO HLDG RCF N OR HLDG RCF S AT 500 FT AGL.
4. FLASH LDG LGT AND WATCH TWR FOR VISUAL/LIGHT SIGNALS.



BEARINGS, TRACKS AND RADIALS ARE MAGNETIC
ALTITUDES (HEIGHTS) AND ELEVATIONS IN FEET
DISTANCES IN NM

INTENTIONALLY LEFT BLANK

Маршрути за полети по правилата за визуални полети
Visual Flight Rules (VFR) Routes

Route designator Name of significant points Coordinates	Waypoint IDENT of VOR/DME BRG & DIST km (NM) ELEV DME Antenna m (ft)	MAG BRG Geodesic DIST km (NM)	Upper Limits Lower Limits Airspace classification		Lateral Limits	Direction of cruising levels		Remarks Controlling unit Frequency			
			Odd	Even		Odd	Even				
1	2	3	4		5	6		7			
V221	Total DIST km (NM) 67.4 (36.3)										
▲ RUMEN (SE of village Apriltsi) 421818N 0241848E	PDV 296° 54.3 (29.3) 180 (600)	144°/324° 15.6 (8.4)	2300FT 500FT AGL Class G		2.2NM	↓	SSR transponder and continuous two-way air-ground communication required. AVBL ABV upper limit after coordination with respective ATS unit. Plovdiv Tower: 133.600 MHz, 125.500MHz, 362.550 MHz FIC Sofia: 130.600 MHz				
▲ РЕПКА (SW of village Malo Konare) 421102N 0242436E	PDV 285° 41.2 (22.2) 180 (600)										
▲ RUPOR (village Trivoditsi) 420756N 0242834E	PDV 280° 34.3 (18.5) 180 (600)	131°/311° 7.9 (4.3)	2300FT 1400FT AMSL Class C	1400FT 500FT AGL Class G	2.2NM						
▲ BAKAL (village Kurtovo Konare) 420601N 0243100E	PDV 275° 30.2 (16.3) 180 (600)	131°/311° 4.9 (2.6)	2300FT 500FT AGL Class C		2.2NM						
▲ MARTY (village Markovo) 420335N 0244152E	PDV 267° 14.8 (8.0) 180 (600)	101°/281° 15.6 (8.4)			2.2NM						
▲ BATEK (E of village Kuklen) 420148N 0244843E	PDV 239° 5.9 (3.2) 180 (600)	104°/284° 10.0 (5.4)	3200FT 500FT AGL Class C		2.2NM				↑		
▲ ABOBI (village Bachkovo) 415718N 0245102E	PDV 186° 11.1 (6.0) 180 (600)	154°/334° 8.9 (4.8)	4300FT 500FT AGL Class C		2.2NM						
▲ SOSAM (4km S of village Bachkovo) 415507N 0244933E	PDV 190° 15.5 (8.4) 180 (600)	202°/022° 4.5 (2.4)	6000FT 500FT AGL Class G		2.2NM				↑ ↓		
Note: ▲ - Compulsory △ - On- request											

Маршрути за полети по правилата за визуални полети
Visual Flight Rules (VFR) Routes

Route designator Name of significant points Coordinates	Waypoint IDENT of VOR/DME BRG & DIST km (NM) ELEV DME Antenna m (ft)	MAG BRG Geodesic DIST km (NM)	Upper Limits Lower Limits Airspace classification		Lateral Limits	Direction of cruising levels		Remarks Controlling unit Frequency
			Odd	Even		Odd	Even	
1	2	3	4		5	6		7
V222	Total DIST km (NM) 88.2 (47.7)							
▲ RUPOR (village Trivoditsi) 420756N 0242834E	PDV 280° 34.3 (18.5) 180(600)	057°/237° 25.5 (13.8)	1400FT 500FT AGL Class G		2.2NM	↓	↑	SSR transponder and continuous two-way air-ground communication required.
▲ BAVNI (NE of village Trud) 421420N 0244500E	PDV 328° 23.1 (12.5) 180(600)							
▲ RITRI (village Rogosh) 421107N 0245215E	PDV 353° 14.7 (7.9) 180(600)	115°/296° 11.6 (6.3)	1100FT 500FT AGL Class C		2.2NM	↑	↓	AVBL ABV upper limit after coordination with respective ATS unit.
▲ VERCE (N of village Yagodovo) 420803N 0245144E	PDV 347° 9.1 (4.9) 180(600)	182°/002° 5.7 (3.1)						
▲ BEATI (E of village Karadzovo) 420531N 0245612E	PDV 044° 6.6 (3.6) 180(600)	122°/302° 7.7 (4.2)	1700FT 500FT AGL Class C		2.2NM	↓	↑	Plovdiv Tower: 133.600 MHz, 125.500MHz, 362.550 MHz FIC Sofia: 130.600 MHz
▲ BAEVO (N of village Konush) 420514N 0250233E	PDV 069° 14.3 (7.7) 180(600)	088°/268° 8.8 (4.7)						
▲ LELKA (E of village Tatarevo) 420455N 0250916E	PDV 077° 23.2 (12.5) 180(600)	088°/268° 9.3 (5.0)	4000FT 2500FT AGL Class C		2.2NM	↑		
▲ VARIL (S of village Stalevo) 420410N 0252328E	PDV 082° 42.6 (23.0) 180(600)	089°/269° 19.6 (10.6)						2500FT 500FT AGL Class G
Note: ▲ - Compulsory △ - On- request								