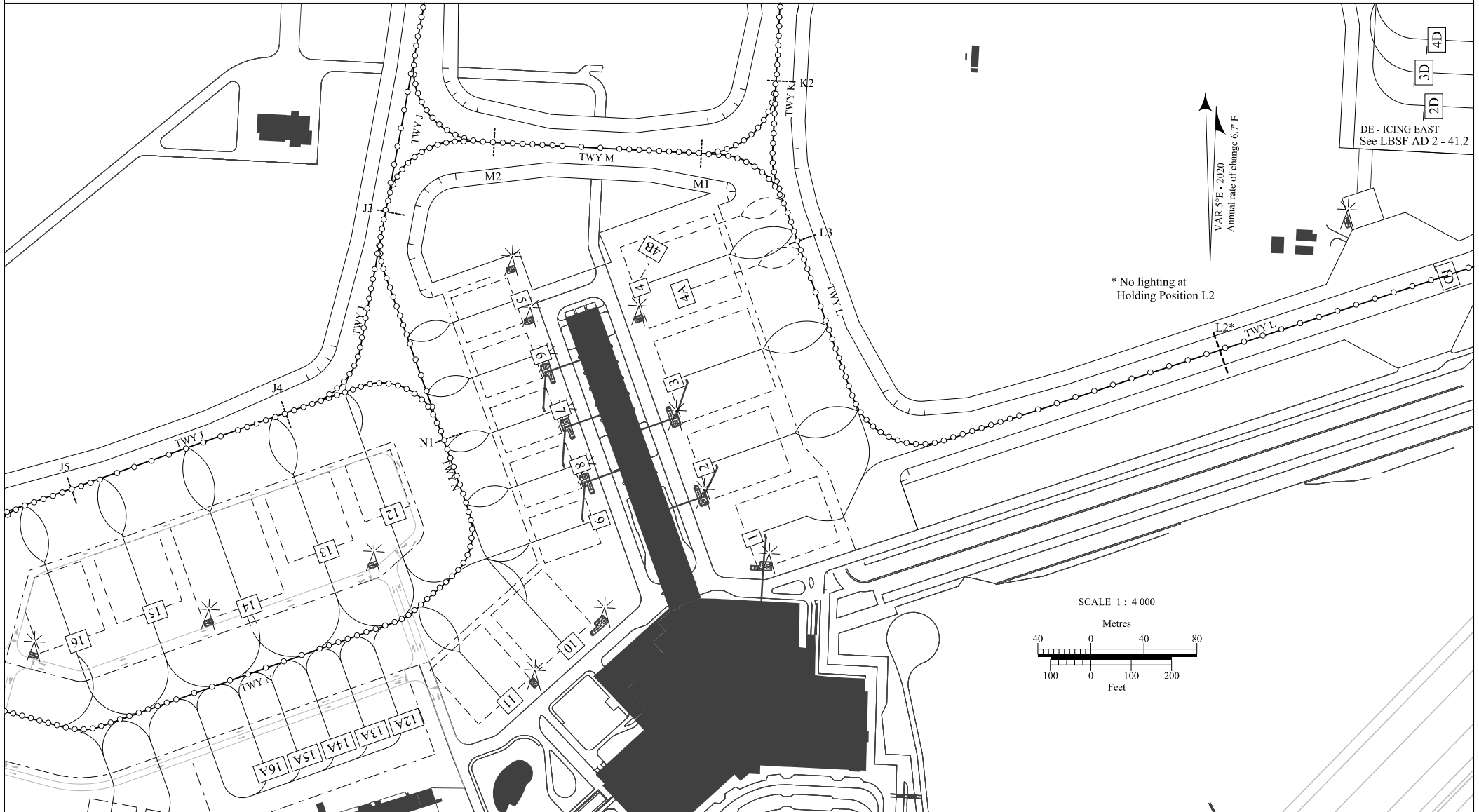


**AIRCRAFT PARKING/
DOCKING CHART - ICAO**

APRON ELEVATION 1749 ft

TWR 118.100 336.400
120.200
121.500 243.000

**SOFIA
PDC - 2**



Aircraft stands/INS checkpoints

Stand number	Geographical coordinates
1	424124.83N 0232453.67E
2	424126.54N 0232452.00E
3	424128.60N 0232450.86E
4	424130.93N 0232449.84E
4A	424130.70N 0232451.05E
4B	424131.15N 0232449.87E
5	424130.63N 0232445.57E
6	424129.27N 0232446.16E
7	424127.91N 0232446.75E
8	424126.55N 0232447.35E
9	424125.19N 0232447.94E
10	424122.23N 0232446.93E
11	424120.93N 0232444.86E
12	424125.60N 0232441.21E
12A	424121.15N 0232441.21E
13	424124.54N 0232439.04E
13A	424120.89N 0232440.08E
14	424123.51N 0232436.33E
14A	424120.55N 0232438.98E
15	424123.18N 0232433.31E
15A	424120.29N 0232437.85E
16	424122.47N 0232430.76E
16A	424120.01N 0232436.73E