

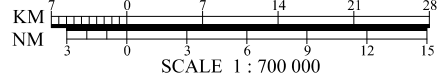
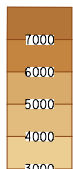
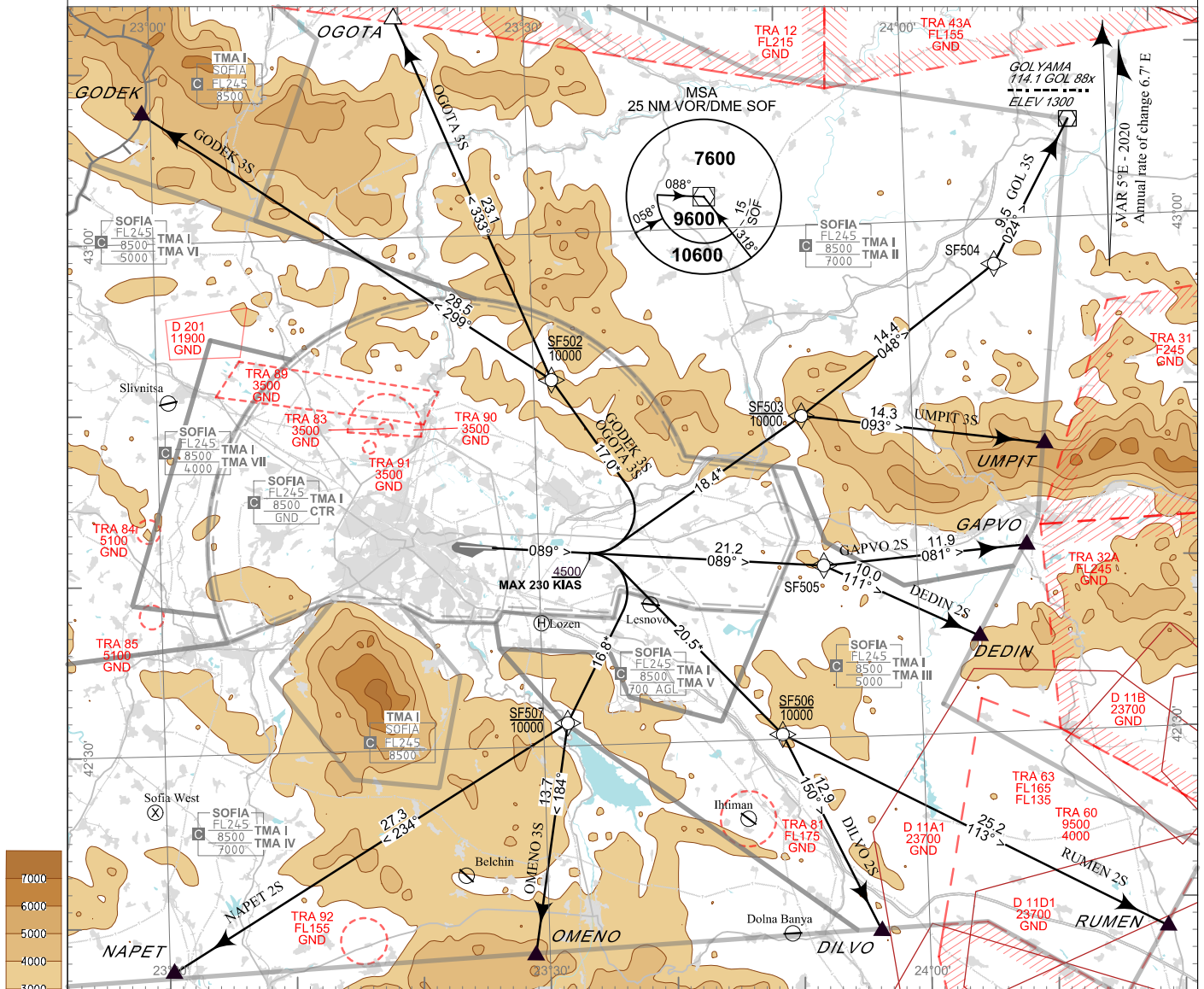
**STANDARD DEPARTURE  
CHART - INSTRUMENT  
(SID) - ICAO**

TRANSITION ALT 10500 FT  
TRANSITION LEVEL BY ATC

APP 123.700 TWR 118.100 ATIS 126.680  
129.900 120.200  
247.575 336.400  
121.500 121.500  
243.000 243.000

**SOFIA  
RNAV Rwy 09**

DEDIN 2S, DILVO 2S, GAPVO 2S, GODEK 3S,  
GOL 3S, NAPET 2S, OGOTA 3S, OMENO 3S,  
RUMEN 2S, UMPIT 3S



ALTITUDES (HEIGHTS) AND ELEVATIONS IN FEET  
DISTANCES IN NM  
Distances marked by \* are approximate distances from DER

**PBN**

RNAV 1  
GNSS or DME/DME/IRU required

**Critical DME**

BLO, VIT	GODEK 3S, OGOTA 3S, OMENO 3S
BLO, VIT, KAL	DEDIN 2S, DILVO2S, GAPVO 2S, NAPET 2S
BLO, VIT, KAL PDV, ROZ	RUMEN 2S
BLO, VIT, SOF GOL, GRN	GOL 3S
BLO, VIT, GOL, PDV	UMPIT 3S

**Non RNAV 1 ACFT**

Report "UNABLE RNAV" at first contact to ATC.  
Expect conventional or omnidirectional DEP and/  
vectoring to be provided by ATC.

**GENERAL REQUIREMENTS**

After take-off immediately contact SOFIA APPROACH

In case of activation of TRA 63 departures to RUMEN might  
be required to climb FL170 before the boundary of TRA 63.  
If unable to comply inform ATC in good time so that  
alternative clearance can be issued.

**WARNING:**

When given a clearance to a level higher than the specified in  
the SID, follow published SID profile, unless restrictions are  
explicitly cancelled by ATC.

**OMNIDIRECTIONAL DEPARTURE:**

Climb straight ahead to 6800 FT, turn to the corresponding  
point or as cleared by ATC  
MNM climb gradient of 5% (304 FT/NM) to 9600 FT

P/T	WPT ID	Flyover	Track MAG (GEO)	DIST NM	Turn Direction	Speed KT	ALT FT	Additional Requirements
<b>GODEK 3S</b> GODEK THREE SIERRA DEPARTURE								
<i>MNM climb gradient of 5.3% (322FT/NM) to 9000FT AMSL due to terrain.</i>								
CA	-	-	089°(094.6°T)	-	Left	230-	4500+	-
DF	SF502	-	-	-	Left	-	10000-	-
TF	GODEK	-	299°(304.7°T)	28.5	-	-	-	-
<b>OGOTA 3S</b> OGOTA THREE SIERRA DEPARTURE								
<i>MNM climb gradient of 5.3% (322FT/NM) to 9000FT AMSL due to terrain.</i>								
CA	-	-	089°(094.6°T)	-	Left	230-	4500+	-
DF	SF502	-	-	-	-	-	10000-	-
TF	OGOTA	-	333°(338.0°T)	23.1	-	-	-	-
<b>GOL 3S</b> GOLYAMA THREE SIERRA DEPARTURE								
<i>MNM climb gradient of 5% (304FT/NM) to 8200FT AMSL due to terrain.</i>								
CA	-	-	089°(094.6°T)	-	Left	230-	4500+	-
DF	SF503	-	-	-	-	-	10000-	-
TF	SF504	-	048°(053.6°T)	14.4	-	-	-	-
TF	GOL	-	024°(028.9°T)	9.5	-	-	-	-
<b>UMPIT 3S</b> UMPIT THREE SIERRA DEPARTURE								
<i>MNM climb gradient of 5% (304FT/NM) to 9000FT AMSL due to terrain.</i>								
CA	-	-	089°(094.6°T)	-	Left	230-	4500+	-
DF	SF503	-	-	-	Right	-	10000-	-
TF	UMPIT	-	093°(098.3°T)	14.3	-	-	-	-
<b>GAPVO 2S</b> GAPVO TWO SIERRA DEPARTURE								
<i>MNM climb gradient of 5% (304FT/NM) to 9200FT AMSL due to terrain.</i>								
CF	SF505	-	089°(094.6°T)	21.2	-	-	-	-
TF	GAPVO	-	081°(086.0°T)	11.9	-	-	-	-

P/T	WPT ID	Flyover	Track MAG (GEO)	DIST NM	Turn Direction	Speed KT	ALT / FL FT	Additional Requirements
<b>DEDIN 2S</b> DEDIN TWO SIERRA DEPARTURE								
<i>MNM climb gradient of 5% (304FT/NM) to 9300FT AMSL due to terrain.</i>								
CF	SF505	-	089°(094.6°T)	21.2	Right	-	-	-
TF	DEDIN	-	111°(116.1°T)	10.0	-	-	-	-
<b>RUMEN 2S</b> RUMEN TWO SIERRA DEPARTURE								
<i>MNM climb gradient of 5% (304FT/NM) to 9500FT AMSL due to airspace restrictions.</i>								
CA	-	-	089°(094.6°T)	-	Right	230-	A4500+	-
DF	SF506	-	-	-	Left	-	A10000-	-
TF	RUMEN	-	113°(118.2°T)	25.2	-	-	-	-
<b>DILVO 2S</b> DILVO TWO SIERRA DEPARTURE								
<i>MNM climb gradient of 5% (304FT/NM) to 9000FT AMSL due to terrain.</i>								
CA	-	-	089°(094.6°T)	-	Right	230-	A4500+	-
DF	SF506	-	-	-	Right	-	A10000-	-
TF	DILVO	-	150°(155.0°T)	12.9	-	-	-	-
<b>OMENO 3S</b> OMENO THREE SIERRA DEPARTURE								
<i>MNM climb gradient of 6% (365FT/NM) to TRL due to terrain.</i>								
CA	-	-	089°(094.6°T)	-	Right	230-	A4500+	-
DF	SF507	-	-	-	Left	-	A10000-	-
TF	OMENO	-	184°(189.5°T)	13.7	-	-	-	-
<b>NAPET 2S</b> NAPET TWO SIERRA DEPARTURE								
<i>MNM climb gradient of 6% (365FT/NM) to 9000FT AMSL due to terrain.</i>								
CA	-	-	089°(094.6°T)	-	Right	230-	A4500+	-
DF	SF507	-	-	-	Right	-	A10000-	-
TF	NAPET	-	234°(239.2°T)	27.3	-	-	-	-

See page LBSF AD 2 - 61.1 for waypoint coordinates

INTENTIONALLY LEFT BLANK