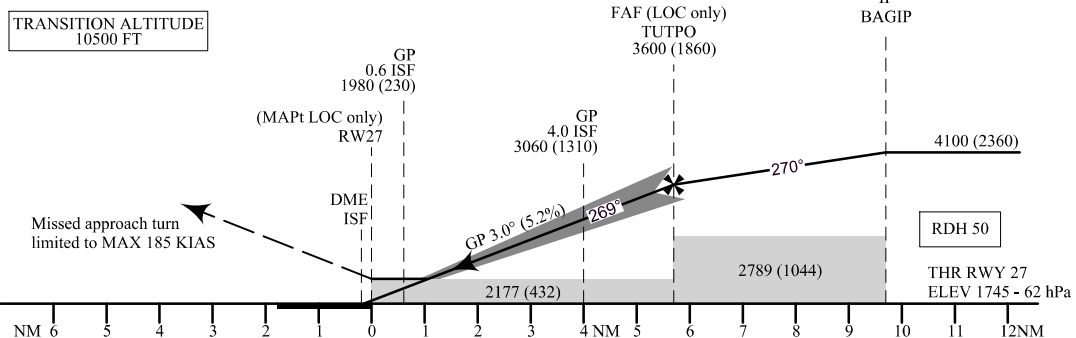
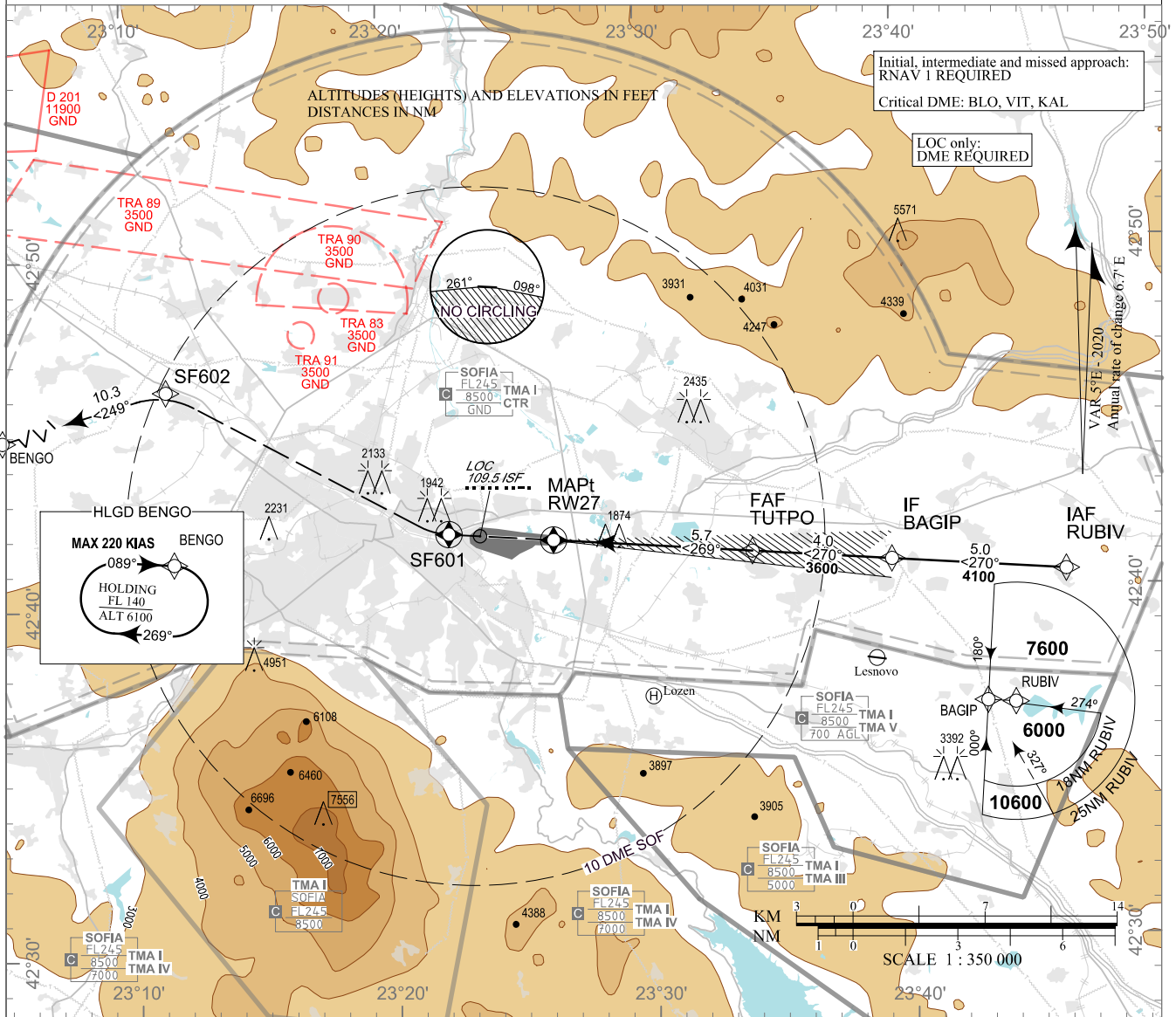


**INSTRUMENT  
APPROACH  
CHART - ICAO**

AERODROME ELEV 1745 - 62 hPa  
THR RWY 27 ELEV 1745 - 62 hPa

APP 123.700 TWR 118.100 ATIS 126.680  
129.900 120.200  
247.575 336.400  
121.500 121.500  
243.000 243.000

**SOFIA  
ILS z CAT II & III  
or LOC z  
RWY 27**



**MISSED APPROACH:** Climb to SF601. Turn to SF602. Turn to BENG0 climbing to 8000.

Missed APCH gradient	OCA (OCH)	A B C D			
		CAT I	1899 (154)	1907 (162)	1915 (170)
	CAT II	1804 (59)	1821 (76)	1833 (88)	1847 (102)
	LOC/DME	2180 (440)			
2.5%	CAT I	2314 (569)	2326 (581)	2334 (589)	2345 (600)
	CAT II	2227 (482)	2244 (499)	2256 (511)	2270 (525)
	LOC/DME	2560 (820)			
Circling		2250 (510)	2290 (550)	2540 (800)	2770 (1030)

CAT IIIA & IIIB approved

DME ISF NM	5.0	4.0	3.0
ALT (HGT) ft	3380 (1630)	3060 (1310)	2740 (1000)

DME ISF reads ZERO at THR 27

GS	kt	60	80	100	120	140	160	180
FAF - MAPt 5.7 NM	min:sec	5:42	4:17	3:25	2:51	2:27	2:08	1:54
Rate of descent	ft/min	316	421	527	632	737	843	948

Timing is not authorized for defining MAPt

**Instrument approach procedures**

P/T	WPT ID	Flyover	Track MAG (GEO)	DIST NM	Turn Direction	Speed KT	ALT FT
<b>From IAF RUBIV</b>							
IF	RUBIV/IAF	-	-	-	-	-	6000+
TF	BAGIP/IF	-	270° (274.8°T)	5.0	-	-	4100+
TF	TUTPO/FAF	-	270° (274.8°T)	4.0	-	-	3600+
TF	RW27/MAPt	Yes	270° (274.8°T)	5.7	-	-	-
DF	SF601	Yes	-	-	-	185-	-
DF	SF602	-	-	-	-	-	-
TF	BENGO	-	249° (254.0°T)	10.3	-	-	8000+

**Holding**

P/T	WPT ID	Flyover	Track MAG (GEO)	Time	Turn Direction	Speed KT	ALT FT
HM	BENGO	Yes	089° (094.3°T)	1 min	Right	220-	8000+

See page LBSF AD 2 - 61.1 for waypoint coordinates