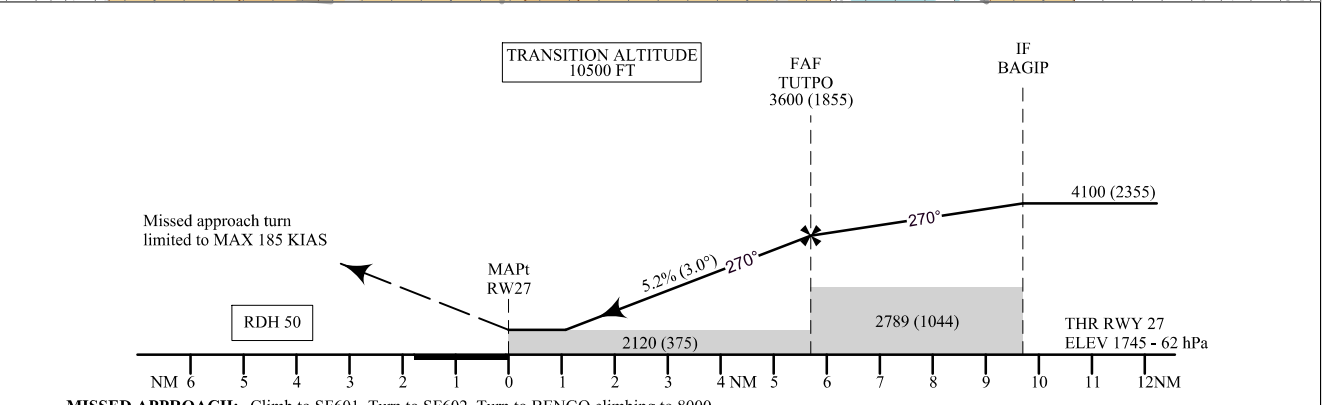
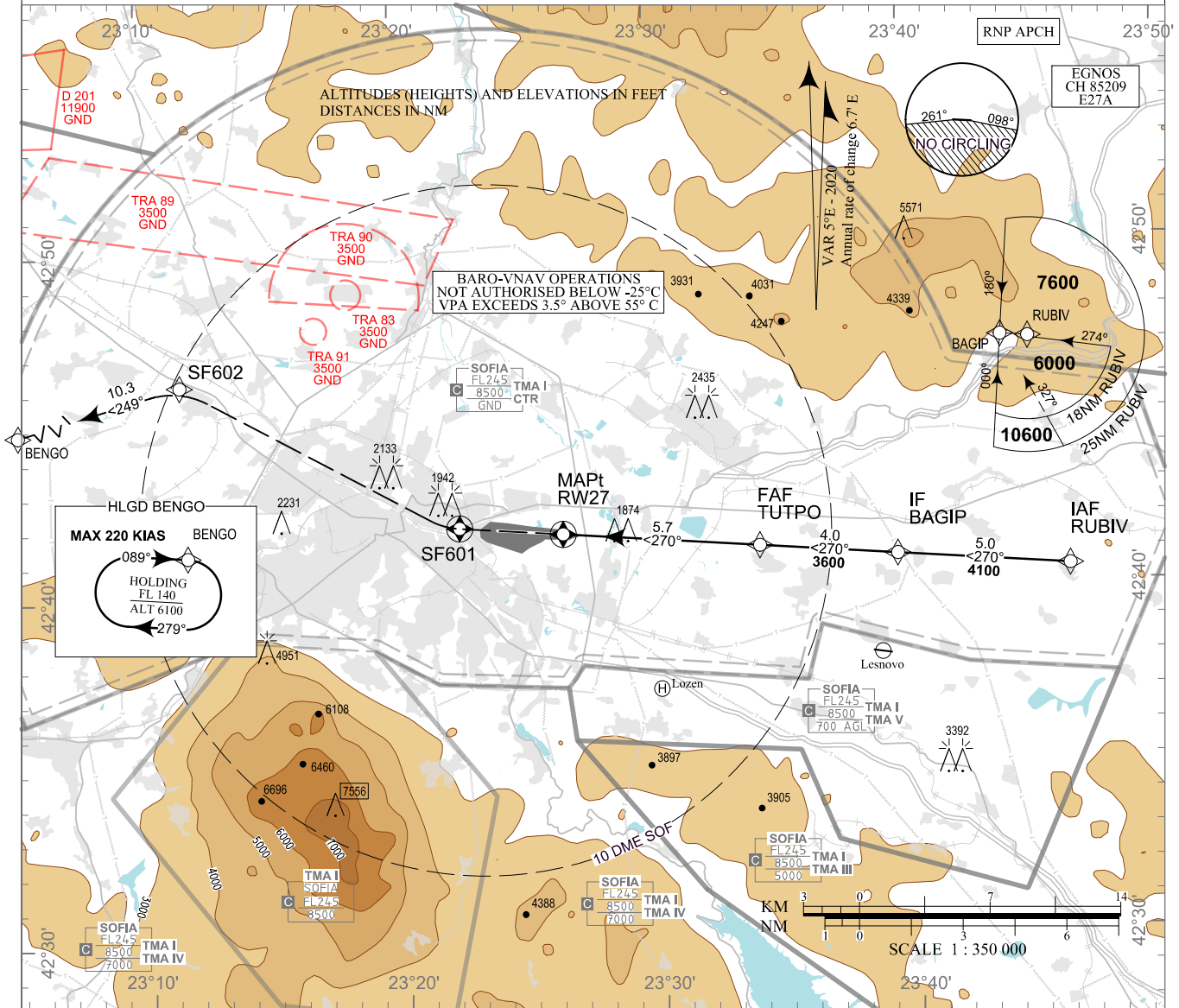


**INSTRUMENT
APPROACH
CHART - ICAO**

AERODROME ELEV 1745 - 62 hPa
THR RWY 27 ELEV 1745 - 62 hPa

APP 123.700 TWR 118.100 ATIS 126.680
129.900 120.200
247.575 336.400
121.500 121.500
243.000 243.000

**SOFIA
RNP
RWY 27**



MISSED APPROACH: Climb to SF601. Turn to SF602. Turn to BENG0 climbing to 8000.

Missed APCH gradient	OCA (OCH)	A	B	C	D
3.0%	LPV	1962 (217)	1974 (229)	1982 (237)	1993 (248)
3.2%	LNAV/ VNAV	1990 (245)	2000 (255)	2010 (265)	2020 (275)
	LNAV		2130 (390)		
2.5%	LPV	2269 (524)	2381 (636)	2389 (644)	2400 (655)
	LNAV/ VNAV	2360 (615)	2370 (625)	2380 (635)	2390 (645)
	LNAV		2510 (770)		
Circling		2250 (510)	2290 (550)	2540 (800)	2770 (1030)

DIST THR NM	5.0	4.0	3.0
ALT (HGT) ft	3380 (1630)	3060 (1320)	2750 (1000)

GS	kt	60	80	100	120	140	160	180
FAF - MAPt 5.7 NM	min:sec	5:42	4:17	3:25	2:51	2:27	2:08	1:54
Rate of descent	ft/min	316	421	527	632	737	843	948

Timing is not authorized for defining MAPt

Instrument approach procedures

P/T	WPT ID	Flyover	Track MAG (GEO)	DIST NM	Turn Direction	Speed KT	ALT FT
From IAF RUBIV							
IF	RUBIV/IAF	-	-	-	-	-	6000+
TF	BAGIP/IF	-	270° (274.8°T)	5.0	-	-	4100+
TF	TUTPO/FAF	-	270° (274.8°T)	4.0	-	-	3600+
TF	RW27/MAPt	Yes	270° (274.8°T)	5.7	-	-	-
DF	SF601	Yes	-	-	-	185-	-
DF	SF602	-	-	-	-	-	-
TF	BENGO	-	249° (254.0°T)	10.3	-	-	8000+

Holding

P/T	WPT ID	Flyover	Track MAG (GEO)	Time	Turn Direction	Speed KT	ALT FT
HM	BENGO	Yes	089° (094.3°T)	1 min	Right	220-	8000+

See page LBSF AD 2 - 61.1 for waypoint coordinates

SBAS FAS Data Block Sofia RNP RWY 27

Data Field	Data Value
Operation Type	0
SBAS Provider	1 (EGNOS)
Airport Identifier	LBSF
Runway	27
Runway Letter	0 (None)
Approach Performance Designator	0
Route Indicator	
Reference Path Data Selector	0
Reference Path Identifier	E27A
LTP/FTP Latitude	424142.3815N
LTP/FTP Longitude	0232623.0050E
LTP/FTP Ellipsoidal Height (m)	576.1
FPAP Latitude	424151.8440N
Delta FPAP Latitude (seconds)	9.4625
FPAP Longitude	0232345.3795E
Delta FPAP Longitude (seconds)	-157.6255
Threshold Crossing Height (ft)	50.0
TCH Units Selector	0 (feet)
Glidepath Angle (degrees)	3.00
Course Width (m)	105.00
Length Offset (m)	0
HAL (m)	40.0
VAL (m)	50.0
CRC Value	0BB463C0
Data Block Hexadecimal Representation	10 06 13 02 0C 1B 00 00 01 37 32 05 DB 9F 52 12 3A 2A 0F 0A 81 2A ED 49 00 8D 30 FB F4 01 2C 01 64 00 C8 FA 0B B4 63 C0

Required Additional Data (not CRC wrapped)

Data Field	Data Value
ICAO Code	LB
LTP/FTP Orthometric Height (m)	531.7

INTENTIONALLY LEFT BLANK