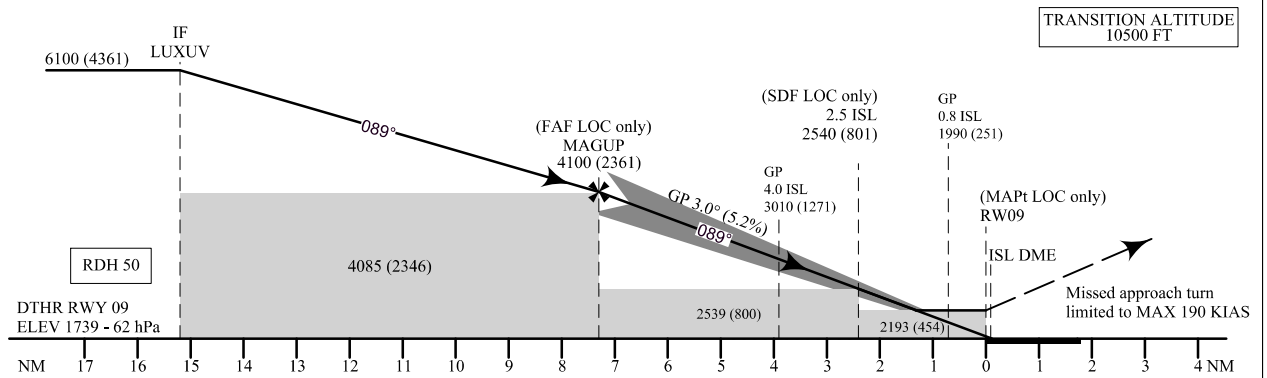
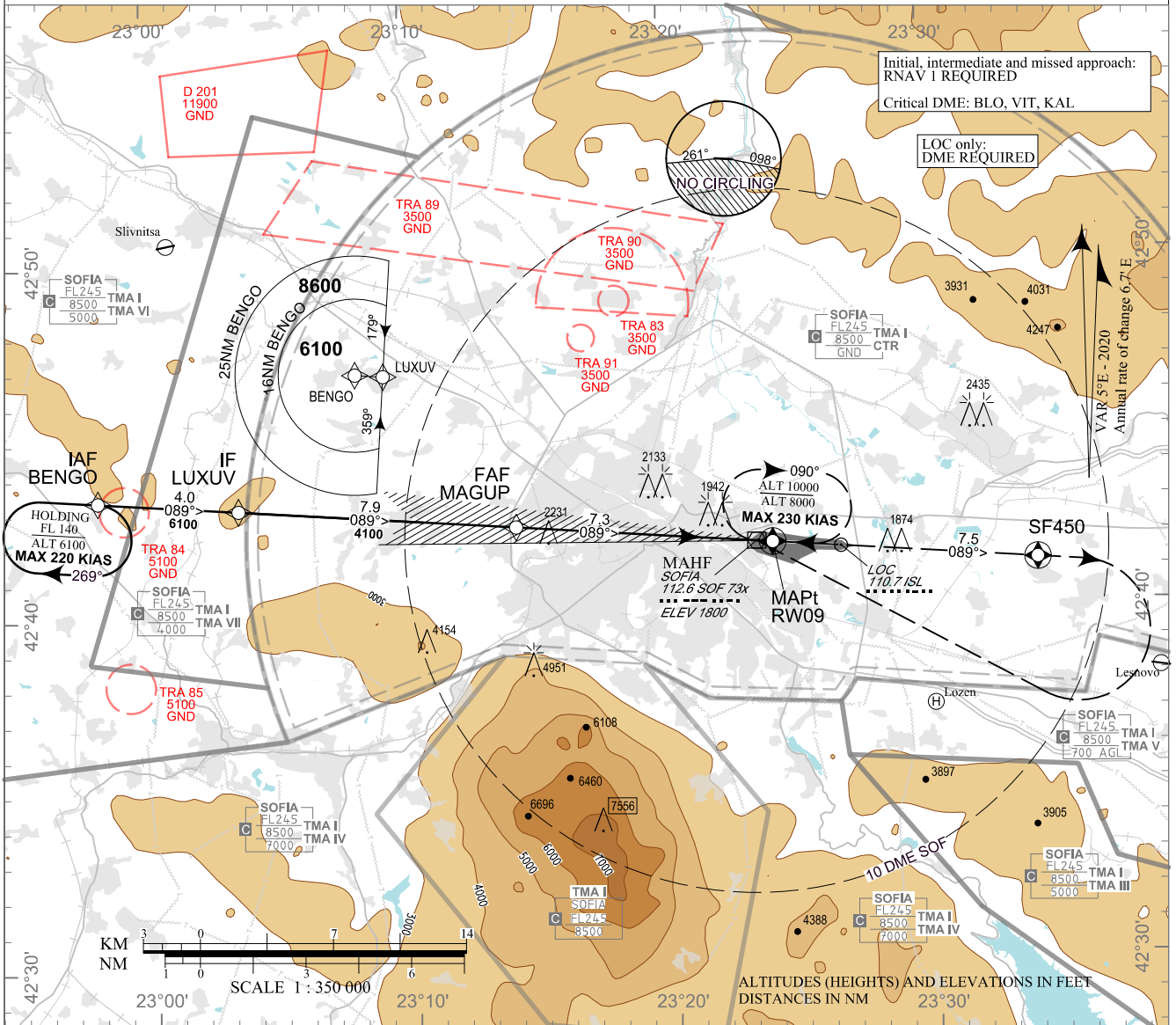


**INSTRUMENT
APPROACH
CHART - ICAO**

AERODROME ELEV 1745 - 62 hPa
DTHR RWY 09 ELEV 1739 - 62 hPa
ILS OCH RELATED TO DTHR RWY 09
LOC AND CIRCLING OCH RELATED TO AD ELEV

APP 123.700 TWR 118.100 ATIS 126.680
129.900 120.200
247.575 336.400
121.500 121.500
243.000 243.000

**SOFIA
ILS z or LOC z
RWY 09**



MISSED APPROACH: Climb to SF450. Climb to 4300. Turn right to SOF and climb 8000 to enter SOF HLDG. Climb 10000 or as directed in SOF HLDG.

Missed APCH gradient	OCA (OCH)	Distances (NM)			
		A	B	C	D
3.0%	CAT I	1894 (155)	1906 (167)	1914 (175)	1925 (186)
	LOC/DME	2200 (460)			
2.5%	CAT I	2188 (449)	2196 (457)	2204 (465)	2215 (476)
	LOC/DME	2540 (800)			
Circling		2250 (510)	2290 (550)	2540 (800)	2770 (1030)

DME ISL NM	7.0	6.0	5.0	4.0	3.0
DIST THR NM	6.8	5.8	4.8	3.8	2.8
ALT (HGT) ft	3960 (2220)	3640 (1910)	3330 (1590)	3010 (1270)	2690 (950)

GS	kt	60	80	100	120	140	160	180
FAF - MAPt 7.3 NM	min:sec	7:18	5:29	4:23	3:39	3:08	2:44	2:26
Rate of descent	ft/min	316	421	527	632	737	843	948

Timing is not authorized for defining MAPt

Instrument approach procedures

P/T	WPT ID	Flyover	Track MAG (GEO)	DIST NM	Turn Direction	Speed KT	ALT FT
From IAF BENG0							
IF	BENG0/IAF	-	-	-	-	-	7000+
TF	LUXUV/IF	-	089° (094.3°T)	4.0	-	-	6100+
TF	MAGUP/FAF	-	089° (094.4°T)	7.9	-	-	4100+
TF	RW09/MAPt	Yes	089° (094.5°T)	7.3	-	-	-
TF	SF450	Yes	089° (094.6°T)	7.5	Right	190-	-
CA	-	-	089° (094.6°T)	-	-	-	4300+
DF	SOF/MAHF	-	-	-	-	-	8000+

Holding

P/T	WPT ID	Flyover	Track MAG (GEO)	Time	Turn Direction	Speed KT	ALT FT
HM	BENG0	Yes	089° (094.3°T)	1 min	Right	220-	6100+
HM	SOF	Yes	270° (274.4°T)	1 min	Right	230-	8000+

See page LBSF AD 2 - 61.1 for waypoint coordinates