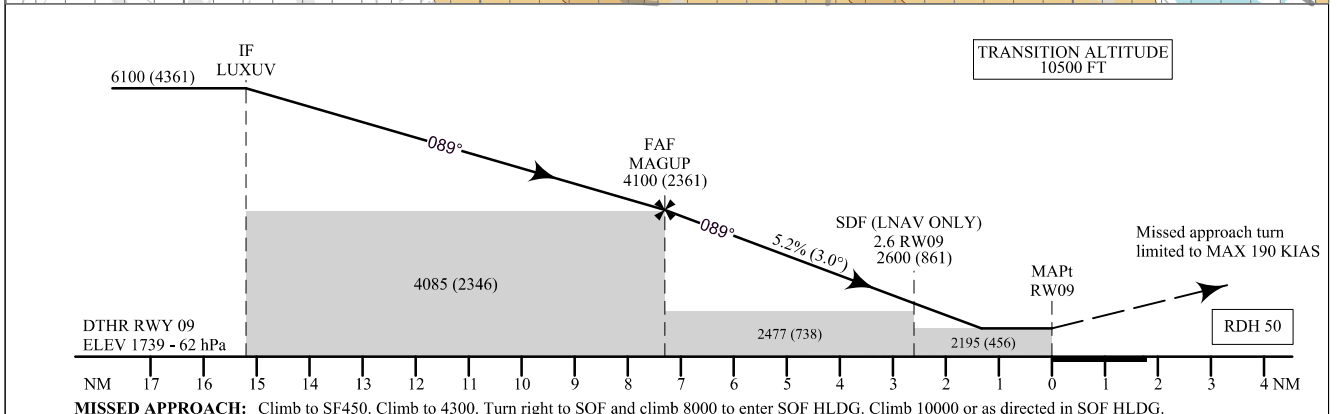
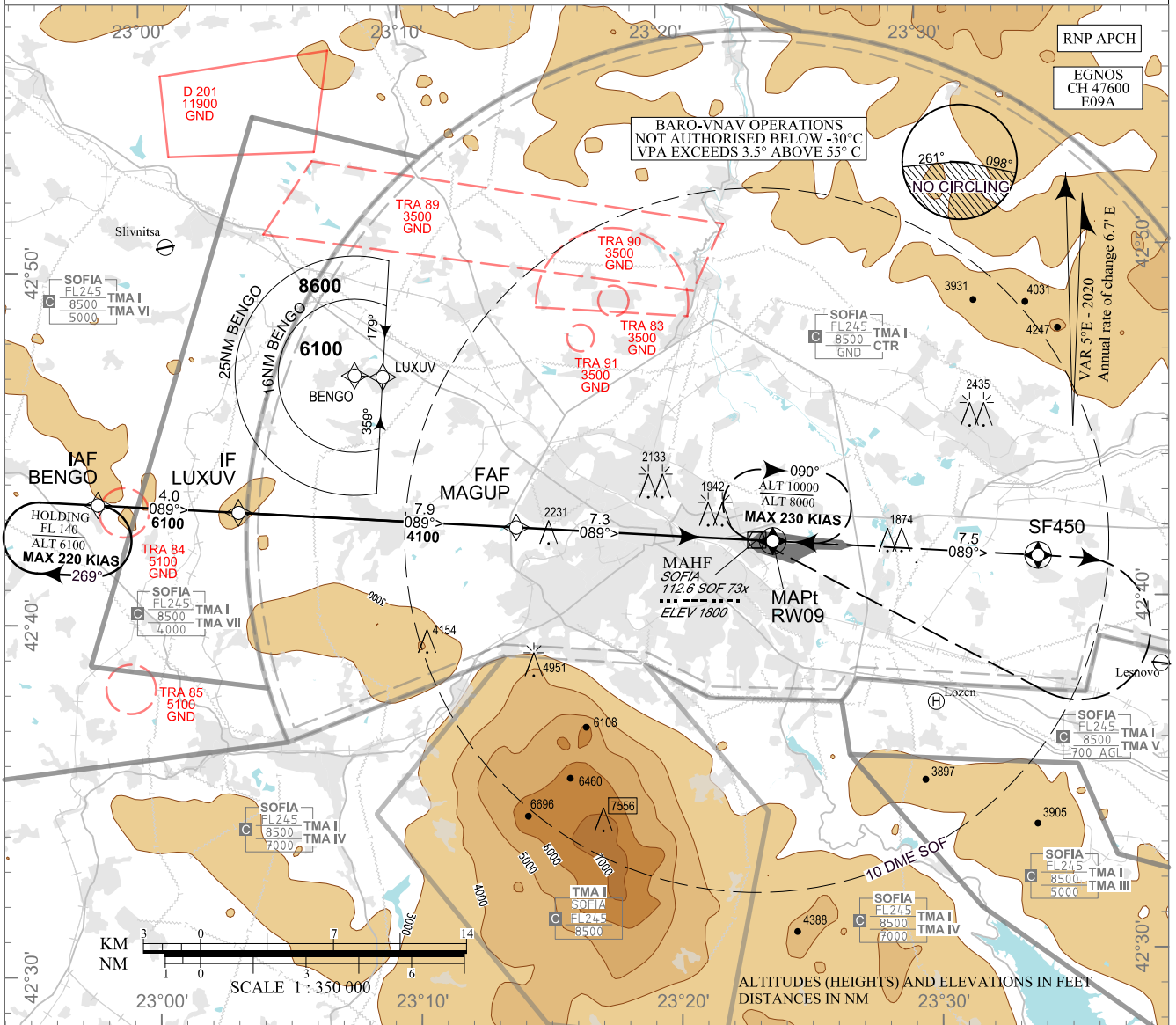


**INSTRUMENT
APPROACH
CHART - ICAO**

AERODROME ELEV 1745 - 62 hPa
DTHR RWY 09 ELEV 1739 - 62 hPa
LNAV/VNAV AND LPV OCH RELATED TO DTHR RWY 09
LNAV AND CIRCLING OCH RELATED TO AD ELEV

APP 123.700 TWR 118.100 ATIS 126.680
129.900 120.200
247.575 336.400
121.500 121.500
243.000 243.000

**SOFIA
RNP
RWY 09**



MISSED APPROACH: Climb to SF450. Climb to 3400. Turn right to SOF and climb 8000 to enter SOF HLDG. Climb 10000 or as directed in SOF HLDG.

Missed APCH gradient	OCA (OCH)	A	B	C	D
3.0%	LPV	1986 (247)	1998 (259)	2006 (267)	2017 (278)
	LNAV/VNAV	2100 (361)	2110 (371)	2120 (381)	2130 (391)
	LNAV	2210 (470)			
2.5%	LPV	2229 (490)	2241 (502)	2249 (510)	2260 (521)
	LNAV/VNAV	2210 (471)	2220 (481)	2230 (491)	2240 (501)
	LNAV	2320 (580)			
Circling		2250 (510)	2290 (550)	2540 (800)	2770 (1030)

DIST THR NM	7.0	6.0	5.0	4.0	3.0	2.0
ALT (HGT) ft	4010 (2270)	3690 (1950)	3370 (1630)	3060 (1320)	2740 (1000)	2430 (690)

GS	kt	60	80	100	120	140	160	180
FAF - MAPt 7.3 NM	min:sec	7:18	5:29	4:23	3:39	3:08	2:44	2:26
Rate of descent	ft/min	316	421	527	632	737	843	948

Timing is not authorized for defining MAPt

Instrument approach procedures

P/T	WPT ID	Flyover	Track MAG (GEO)	DIST NM	Turn Direction	Speed KT	ALT FT
From IAF BENG0							
IF	BENG0/IAF	-	-	-	-	-	7000+
TF	LUXUV/IF	-	089° (094.3°T)	4.0	-	-	6100+
TF	MAGUP/FAF	-	089° (094.4°T)	7.9	-	-	4100+
TF	RW09/MAPt	Yes	089° (094.5°T)	7.3	-	-	-
TF	SF450	Yes	089° (094.6°T)	7.5	Right	190-	-
CA	-	-	089° (094.6°T)	-	-	-	4300+
DF	SOF/MAHF	-	-	-	-	-	8000+

Holding

P/T	WPT ID	Flyover	Track MAG (GEO)	Time	Turn Direction	Speed KT	ALT FT
HM	BENG0	Yes	089° (094.3°T)	1 min	Right	220-	6100+
HM	SOF	Yes	270° (274.4°T)	1 min	Right	230-	8000+

See page LBSF AD 2 - 61.1 for waypoint coordinates

SBAS FAS Data Block Sofia RNP RWY 09

Data Field	Data Value
Operation Type	0
SBAS Provider	1 (EGNOS)
Airport Identifier	LBSF
Runway	09
Runway Letter	0 (None)
Approach Performance Designator	0
Route Indicator	
Reference Path Data Selector	0
Reference Path Identifier	E09A
LTP/FTP Latitude	424151.0585N
LTP/FTP Longitude	232358.5145E
LTP/FTP Ellipsoidal Height (m)	574.4
FPAP Latitude	424142.3815N
Delta FPAP Latitude (seconds)	-8.6770
FPAP Longitude	0232623.0050E
Delta FPAP Longitude (seconds)	144.4905
Threshold Crossing Height (ft)	50.0
TCH Units Selector	0 (feet)
Glidepath Angle (degrees)	3.00
Course Width (m)	105.00
Length Offset (m)	0
HAL (m)	40.0
VAL (m)	50.0
CRC Value	B25D28FA
Data Block Hexadecimal Representation	10 06 13 02 0C 09 00 00 01 39 30 05 A5 E3 52 12 65 C1 0A 0A 70 2A 36 BC FF D5 68 04 F4 01 2C 01 64 00 C8 FA B2 5D 28 FA

Required Additional Data (not CRC wrapped)

Data Field	Data Value
ICAO Code	LB
LTP/FTP Orthometric Height (m)	530.0

INTENTIONALLY LEFT BLANK