

VISUAL APPROACH
CHART - ICAO

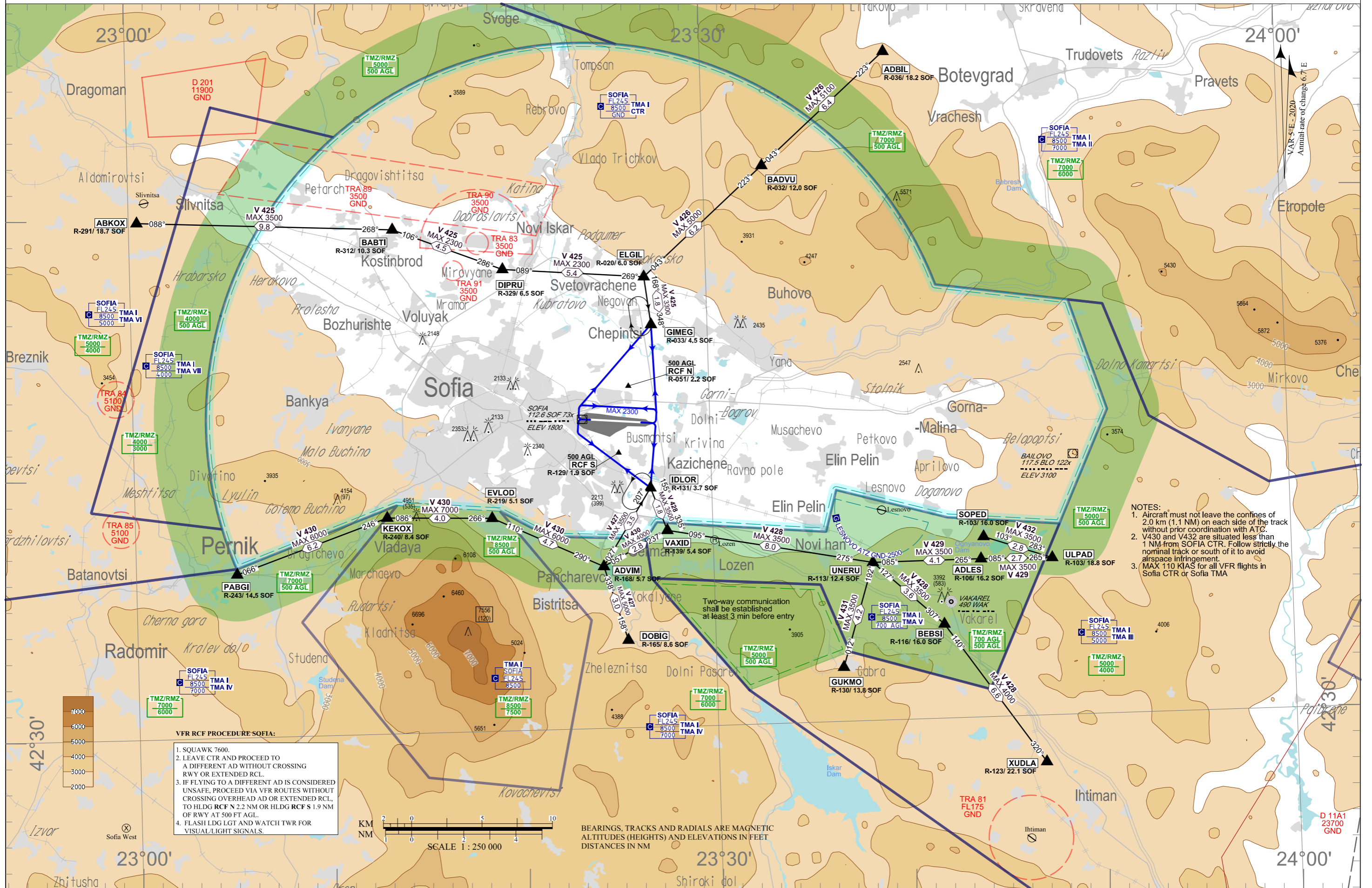
AD ELEV 1745 - 62 hPa
ARP 42 41 42 N 23 24 30 E

VASIS
RWY 09 - PAPI 3.0° MEHT 66 DUAL
RWY 27 - PAPI 3.0° MEHT 66 LEFT

TRANSITION ALT 10500 FT
TRANSITION LEVEL BY ATC

FIC 130.600 APP 123.700 247.575 TWR 118.100 336.400 ATIS 126.680
129.900 120.200
121.500 243.000 121.500 243.000

SOFIA
VFR ROUTES



- NOTES:
1. Aircraft must not leave the confines of 2.0 km (1.1 NM) on each side of the track without prior coordination with ATC.
 2. V430 and V432 are situated less than 1 NM from SOFIA CTR. Follow strictly the nominal track or south of it to avoid airspace infringement.
 3. MAX 110 KIAS for all VFR flights in Sofia CTR or Sofia TMA.

- VFR RCF PROCEDURE SOFIA:
1. SQUAWK 7600.
 2. LEAVE CTR AND PROCEED TO A DIFFERENT AD WITHOUT CROSSING RWY OR EXTENDED RCL.
 3. IF FLYING TO A DIFFERENT AD IS CONSIDERED UNSAFE, PROCEED VIA VFR ROUTES WITHOUT CROSSING OVERHEAD AD OR EXTENDED RCL, TO HLDG RCF N 2.2 NM OR HLDG RCF S 1.9 NM OF RWY AT 500 FT AGL.
 4. FLASH LDG LGT AND WATCH TWR FOR VISUAL/LIGHT SIGNALS.

BEARINGS, TRACKS AND RADIALS ARE MAGNETIC
ALTITUDES (HEIGHTS) AND ELEVATIONS IN FEET
DISTANCES IN NM

INTENTIONALLY LEFT BLANK

Маршрути за полети по правилата за визуални полети
Visual Flight Rules (VFR) Routes

Route designator Name of significant points Coordinates	Waypoint IDENT of VOR/DME BRG & DIST km (NM) ELEV DME Antenna m (ft)	MAG BRG Geodesic DIST km (NM)	Upper Limits Lower Limits Airspace classification	Lateral Limits	Direction of cruising levels Odd Even	Remarks Controlling unit Frequency
1	2	3	4	5	6	7
V425	Total DIST km (NM) 40.0 (21.5)					
▲ ABKOX (3.4km SW of town Slivnitsa) 424952N 0230027E	SOF 290° 34.6 (18.7) 540 (1800)	088°/268° 18.2 (9.8)	3500FT 500FT AGL Class C	2.2NM	↓ ↑	SSR transponder and continuous two-way air-ground communication required. AVBL ABV upper limit after coordination with respective ATS unit. BABTI-DIPRU not AVBL in case of activation of TRA90. ALTN route: V430 or by ATC clearance. Sofia APP: 123.700 MHz, 129.900 MHz, 247.575 MHz Sofia TWR: 118.100 MHz, 120.200 MHz, 336.400 MHz FIC Sofia: 130.600 MHz
▲ BABTI (NE of town Kostinbrod) 424923N 0231346E	SOF 312° 19.1 (10.3) 540 (1800)	106°/286° 8.3 (4.5)	2300FT 500FT AGL Class C	2.2NM		
▲ DIPRU (NE of village Mirovyane) 424745N 0231927E	SOF 329° 12.1 (6.5) 540 (1800)	089°/269° 10.1 (5.4)		2.2NM		
▲ ELGIL (village Lokorsko) 424719N 0232648E	SOF 020° 11.1 (6.0) 540 (1800)	168°/348° 3.4 (1.8)	3300FT 500FT AGL Class C	2.2NM		
▲ GIMEG (E of village Chepintsi) 424529N 0232706E	SOF 032° 8.4 (4.5) 540 (1800)			2.2NM		
Note: ▲ - Compulsory △ - On-request						

Route designator Name of significant points Coordinates	Waypoint IDENT of VOR/DME BRG & DIST km (NM) ELEV DME Antenna m (ft)	MAG BRG Geodesic DIST km (NM)	Upper Limits Lower Limits Airspace classification	Lateral Limits	Direction of cruising levels Odd Even	Remarks Controlling unit Frequency
1	2	3	4	5	6	7
V426	Total DIST km (NM) 23.3 (12.6)					
▲ ADBIL (S of village Litakovo) 425541N 0233936E	SOF 036° 33.8 (18.2) 540 (1800)	223°/043° 11.8 (6.4)	5100FT 500FT AGL Class C	2.2NM	↓ ↑	SSR transponder and continuous two-way air-ground communication required. AVBL ABV upper limit after coordination with respective ATS unit. Sofia APP: 123.700 MHz, 129.900 MHz, 247.575 MHz Sofia TWR: 118.100 MHz, 120.200 MHz, 336.400 MHz FIC Sofia: 130.600 MHz
▲ BADVU (village Yablanitsa) 425127N 0233306E	SOF 032° 22.1 (12.0) 540 (1800)	223°/043° 11.5 (6.2)	5000FT 500FT AGL Class C	2.2NM		
▲ ELGIL (village Lokorsko) 424719N 0232648E	SOF 020° 11.1 (6.0) 540 (1800)					
Note: ▲ - Compulsory △ - On-request						

Маршрути за полети по правилата за визуални полети
Visual Flight Rules (VFR) Routes

Route designator Name of significant points Coordinates	Waypoint IDENT of VOR/DME BRG & DIST km (NM) ELEV DME Antenna m (ft)	MAG BRG Geodesic DIST km (NM)	Upper Limits Lower Limits Airspace classification	Lateral Limits	Direction of cruising levels		Remarks Controlling unit Frequency
					Odd	Even	
1	2	3	4	5	6		7
V427	Total DIST km (NM) 12.0 (6.5)						
▲ DOBIG (2.4km S of village Kokalyane) 423324N 0232528E	SOF 164° 16.0 (8.6) 540 (1800)	338°/158° 5.5 (3.0)	5000FT 500FT AGL Class G	2.2NM	↑	↓	SSR transponder and continuous two-way air-ground communication required. AVBL ABV upper limit after coordination with respective ATS unit. Sofia APP: 123.700 MHz, 129.900 MHz, 247.575 MHz Sofia TWR: 118.100 MHz, 120.200 MHz, 336.400 MHz FIC Sofia: 130.600 MHz
▲ ADVIM (Pancharevo dam) 423615N 0232418E	SOF 168° 10.5 (5.7) 540 (1800)						
▲ IDLOR (SW of village Kazichene) 423913N 0232650E	SOF 131° 6.8 (3.7) 540 (1800)	027°/207° 6.5 (3.5)	3500FT 500FT AGL Class C	2.2NM	↓	↑	
Note: ▲ - Compulsory △ - On-request							

Route designator Name of significant points Coordinates	Waypoint IDENT of VOR/DME BRG & DIST km (NM) ELEV DME Antenna m (ft)	MAG BRG Geodesic DIST km (NM)	Upper Limits Lower Limits Airspace classification	Lateral Limits	Direction of cruising levels		Remarks Controlling unit Frequency
					Odd	Even	
1	2	3	4	5	6		7
V428	Total DIST km (NM) 37.0 (20.0)						
▲ XUDLA (2.5km SE of village Verinsko) 422815N 0234658E	SOF 123° 41.0 (22.1) 540 (1800)	320°/140° 12.2 (6.6)	4000FT 500FT AGL Class G	2.2NM	↓		SSR transponder and continuous two-way air-ground communication required. AVBL ABV upper limit after coordination with respective ATS unit. Sofia APP: 123.700 MHz, 129.900 MHz, 247.575 MHz Sofia TWR: 118.100 MHz, 120.200 MHz, 336.400 MHz FIC Sofia: 130.600 MHz
▲ BEBSI (village Vakarel) 423339N 0234153E	SOF 116° 29.6 (16.0) 540 (1800)						
▲ UNERU (Pobit Kamak railway station) 423606N 0233816E	SOF 112° 23.0 (12.4) 540 (1800)	307°/127° 6.7 (3.6)	3500FT 500FT AGL Class G	2.2NM			
▲ VAXID (Vrana road junction) 423734N 0232739E	SOF 139° 9.9 (5.4) 540 (1800)	275°/095° 14.8 (8.0)		2.2NM			
▲ IDLOR (SW of village Kazichene) 423913N 0232650E	SOF 131° 6.8 (3.7) 540 (1800)	335°/155° 3.3 (1.8)	3500FT 500FT AGL Class C	2.2NM	↑		
Note: ▲ - Compulsory △ - On-request							

Маршрути за полети по правилата за визуални полети
Visual Flight Rules (VFR) Routes

Route designator Name of significant points Coordinates	Waypoint IDENT of VOR/DME BRG & DIST km (NM) ELEV DME Antenna m (ft)	MAG BRG Geodesic DIST km (NM)	Upper Limits Lower Limits Airspace classification	Lateral Limits	Direction of cruising levels Odd Even	Remarks Controlling unit Frequency
1	2	3	4	5	6	7
V429	Total DIST km (NM) 12.8 (6.8)					
▲ ULPAD (E of Ognyanovo dam) 423604 0234735E	SOF 103° 34.8 (18.8) 540 (1800)	265°/085° 5.1 (2.7)	3500FT 500FT AGL Class G	2.2NM	↓	SSR transponder and continuous two-way air-ground communication required. AVBL ABV upper limit after coordination with respective ATS unit. Sofia APP: 123.700 MHz, 129.900 MHz, 247.575 MHz Sofia TWR: 118.100 MHz, 120.200 MHz, 336.400 MHz FIC Sofia: 130.600 MHz
▲ ADLES (SW of Ognyanovo dam) 423605N 0234352E	SOF 106° 30.0 (16.2) 540 (1800)					
▲ UNERU (Pobit Kamak railway station) 423606N 0233816E	SOF 112° 23.0 (12.4) 540 (1800)	265°/085° 7.7 (4.1)	2.2NM	↑		
Note: ▲ - Compulsory △ - On-request						

Route designator Name of significant points Coordinates	Waypoint IDENT of VOR/DME BRG & DIST km (NM) ELEV DME Antenna m (ft)	MAG BRG Geodesic DIST km (NM)	Upper Limits Lower Limits Airspace classification	Lateral Limits	Direction of cruising levels Odd Even	Remarks Controlling unit Frequency
1	2	3	4	5	6	7
V430	Total DIST km (NM) 32.7 (17.7)					
▲ PABGI (Industrial area of town Pernik) 423618N 0230515E	SOF 242° 26.8 (14.5) 540 (1800)	066°/246° 11.4 (6.2)	6000FT 500FT AGL Class G	2.2NM	↓	SSR transponder and continuous two-way air-ground communication with FIC required. AVBL ABV upper limit after coordination with respective ATS unit. Sofia APP: 123.700 MHz, 129.900 MHz, 247.575 MHz Sofia TWR: 118.100 MHz, 120.200 MHz, 336.400 MHz FIC Sofia: 130.600 MHz
▲ KEKOX (2.2km NE of village Vladaya) 423820N 0231307E	SOF 240° 15.5 (8.4) 540 (1800)					
▲ EVLOD (Dragalevtsi Stadium) 423813N 0231834E	SOF 219° 9.4 (5.1) 540 (1800)	086°/266° 7.5 (4.0)	7000FT 500FT AGL Class G	2.2NM		
▲ ADVIM (Pancharevo dam) 423615N 0232418E	SOF 168° 10.5 (5.7) 540 (1800)	110°/290° 8.6 (4.7)	6000FT 500FT AGL Class G	2.2NM		
▲ VAXID (Vrana road junction) 423734N 0232739E	SOF 139° 9.9 (5.4) 540 (1800)	057°/237° 5.2 (2.8)	4000FT 500FT AGL Class G	2.2NM	↑	The route is situated less than 1 NM from SOFIA CTR. Follow strictly the nominal track or south of it to avoid airspace infringement in the LBSF CTR.
Note: ▲ - Compulsory △ - On-request						

Маршрути за полети по правилата за визуални полети
Visual Flight Rules (VFR) Routes

Route designator Name of significant points Coordinates	Waypoint IDENT of VOR/DME BRG & DIST km (NM) ELEV DME Antenna m (ft)	MAG BRG Geodesic DIST km (NM)	Upper Limits Lower Limits Airspace classification	Lateral Limits	Direction of cruising levels		Remarks Controlling unit Frequency
					Odd	Even	
1	2	3	4	5	6		7
V431	Total DIST km (NM) 7.7 (4.2)						SSR transponder and continuous two-way air-ground communication required. AVBL ABV upper limit after coordination with respective ATS unit. Sofia APP: 123.700 MHz, 129.900 MHz, 247.575 MHz Sofia TWR: 118.100 MHz, 120.200 MHz, 336.400 MHz FIC Sofia: 130.600 MHz
▲ GUKMO (village Gabra) 423207N 0233636E	SOF 130° 25.6 (13.8) 540 (1800)	012°/192° 7.7 (4.2)	3500FT 500FT AGL Class G	2.2NM	↓		
▲ UNERU (Pobit Kamak railway station) 423606N 0233816E	SOF 112° 23.0 (12.4) 540 (1800)				↑		
Note: ▲ - Compulsory △ - On-request							

Route designator Name of significant points Coordinates	Waypoint IDENT of VOR/DME BRG & DIST km (NM) ELEV DME Antenna m (ft)	MAG BRG Geodesic DIST km (NM)	Upper Limits Lower Limits Airspace classification	Lateral Limits	Direction of cruising levels		Remarks Controlling unit Frequency
					Odd	Even	
1	2	3	4	5	6		7
V432	Total DIST km (NM) 5.1 (2.8)						SSR transponder and continuous two-way air-ground communication required. AVBL ABV upper limit after coordination with respective ATS unit. Sofia APP: 123.700 MHz, 129.900 MHz, 247.575 MHz Sofia TWR: 118.100 MHz, 120.200 MHz, 336.400 MHz FIC Sofia: 130.600 MHz The route is situated less than 1 NM from SOFIA CTR. Follow strictly the nominal track or south of it to avoid airspace infringement in the LBSF CTR.
▲ ULPAD (E of Ognyanovo dam) 423604N 0234735E	SOF 103° 34.8 (18.8) 540 (1800)	283°/103° 5.1 (2.8)	3500FT 500FT AGL Class G	2.2NM	↓		
▲ SOPED (of village Ognyanovo) 423657N 0234403E	SOF 103° 29.7 (16.0) 540 (1800)				↑		
Note: ▲ - Compulsory △ - On-request							