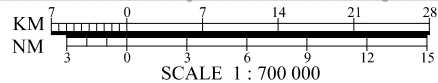
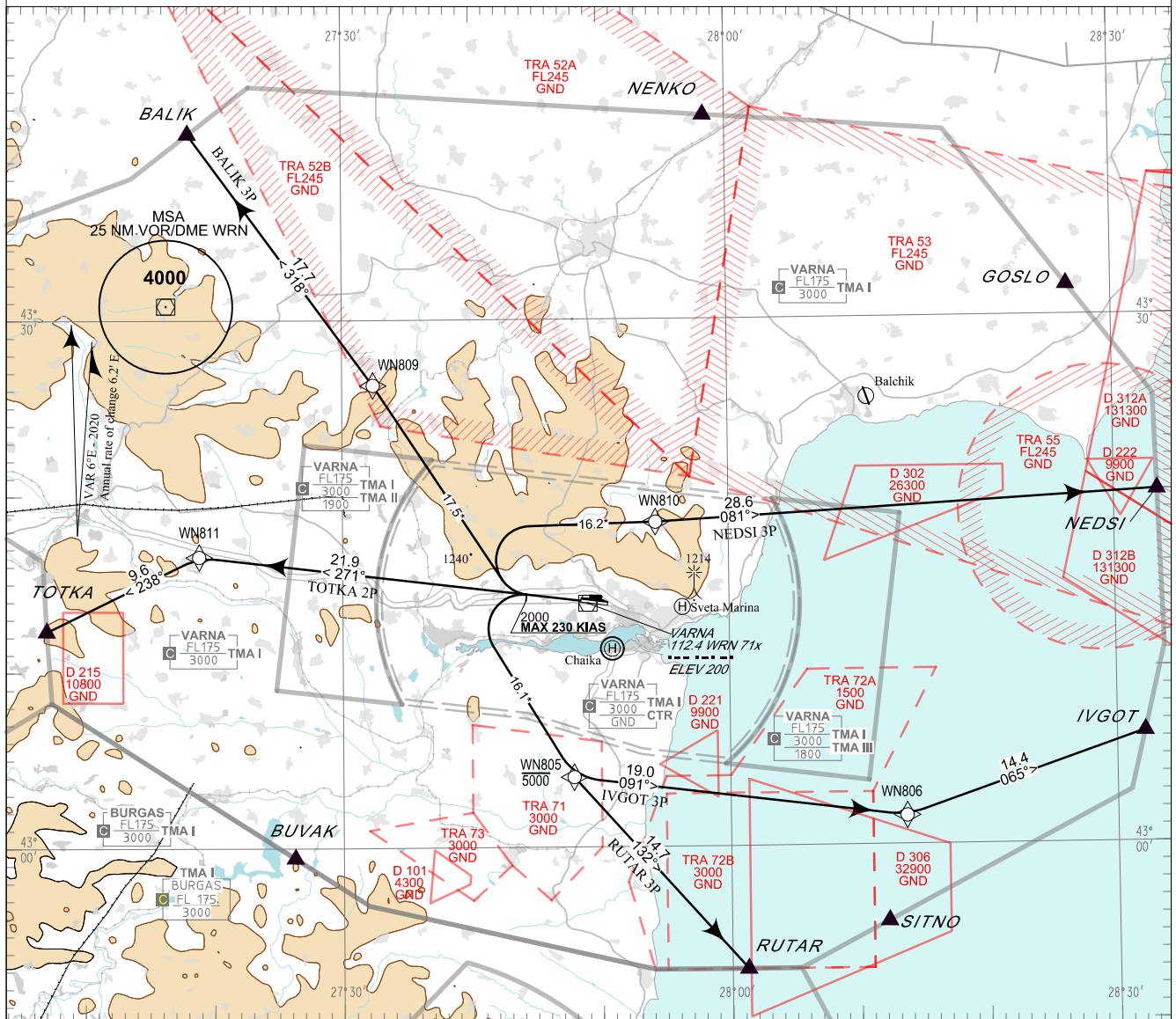


**STANDARD DEPARTURE CHART -
INSTRUMENT (SID) - ICAO**

TRANSITION ALT 10500 FT APP 124.600 TWR 119.500 ATIS 126.880
TRANSITION LEVEL BY ATC 130.450 118.900
233.250 296.725
121.500 121.500
243.000 243.000

**VARNA
RNAV RY 27**

BALIK 3P, IVGOT 3P, NEDSI 3P,
RUTAR 3P, TOTKA 2P



ALTITUDES (HEIGHTS) AND ELEVATIONS IN FEET
DISTANCES IN NM
* Distances marked by * are approximate distances from DER

PBN
RNAV 1

Critical DME
EMO, VRB on IVGOT 3P, NEDSI 3P, RUTAR 3P
EMO on BALIK 3P, TOTKA 2P

Non RNAV 1 ACFT:
Report "UNABLE RNAV" at first contact to ATC.
Expect OMNIDIRECTIONAL DEPARTURE and/ or
vectoring to be provided by ATC

OMNIDIRECTIONAL DEPARTURE:
Climb straight ahead to 2000 FT. Climb on track 257° to
4000 FT.
Turn to the corresponding point or as cleared by ATC
MNM climb gradient of 5% (304 FT/NM) to 4000 FT

AFTER TAKE-OFF:
Immediately contact VARNA APP.

Strict compliance with departure procedures is necessary. If
unable to comply inform ATC in good time so that alternative
clearance can be issued.

WARNING:
When given a clearance to a level higher than the specified in
the SID, follow published SID profile, unless restrictions are
explicitly cancelled by ATC.

| P/T | WPT ID | Flyover | Track MAG (GEO) | DIST NM | Turn Direction | Speed KT | ALT FT | Additional Requirements |
|---|--------|---------|--------------------|------------|-------------------|-------------|-----------|----------------------------|
| BALIK 3P BALIK THREE PAPA DEPARTURE | | | | | | | | |
| <i>MNM climb gradient of 5.0% (304 FT/NM) to 4000FT AMSL.</i> | | | | | | | | |
| CA | - | - | 271°(276.9°T) | - | Right | 230- | 2000+ | - |
| DF | WN809 | - | - | - | - | - | - | - |
| TF | BALIK | - | 318°(323.8°T) | 17.7 | - | - | - | - |
| IVGOT 3P IVGOT THREE PAPA DEPARTURE | | | | | | | | |
| <i>MNM climb gradient of 5.0% (304 FT/NM) to 4000FT AMSL.</i> | | | | | | | | |
| CA | - | - | 271°(276.9°T) | - | Left | 230- | 2000+ | - |
| DF | WN805 | - | - | - | Left | - | 5000- | - |
| TF | WN806 | - | 091°(096.9°T) | 19.0 | Left | - | - | - |
| TF | IVGOT | - | 065°(071.0°T) | 14.4 | - | - | - | - |
| NEDSI 3P NEDSI THREE PAPA DEPARTURE | | | | | | | | |
| <i>MNM climb gradient of 5.0% (304 FT/NM) to 4000FT AMSL.</i> | | | | | | | | |
| CA | - | - | 271°(276.9°T) | - | Right | 230- | 2000+ | - |
| DF | WN810 | - | - | - | - | - | - | - |
| TF | NEDSI | - | 081°(086.6°T) | 28.6 | - | - | - | - |
| RUTAR 3P RUTAR THREE PAPA DEPARTURE | | | | | | | | |
| <i>MNM climb gradient of 5.0% (304 FT/NM) to 4000FT AMSL.</i> | | | | | | | | |
| CA | - | - | 271°(276.9°T) | - | Left | 230- | 2000+ | - |
| DF | WN805 | - | - | - | - | - | 5000- | - |
| TF | RUTAR | - | 132°(138.1°T) | 14.7 | - | - | - | - |
| TOTKA 2P TOTKA TWO PAPA DEPARTURE | | | | | | | | |
| <i>MNM climb gradient of 5.0% (304 FT/NM) to 4000FT AMSL.</i> | | | | | | | | |
| CF | WN811 | - | 271°(276.9°T) | 21.9 | Left | - | - | - |
| TF | TOTKA | - | 238°(244.0°T) | 9.6 | - | - | - | - |

See page LBWN AD 2 - 61.1 for waypoint coordinates