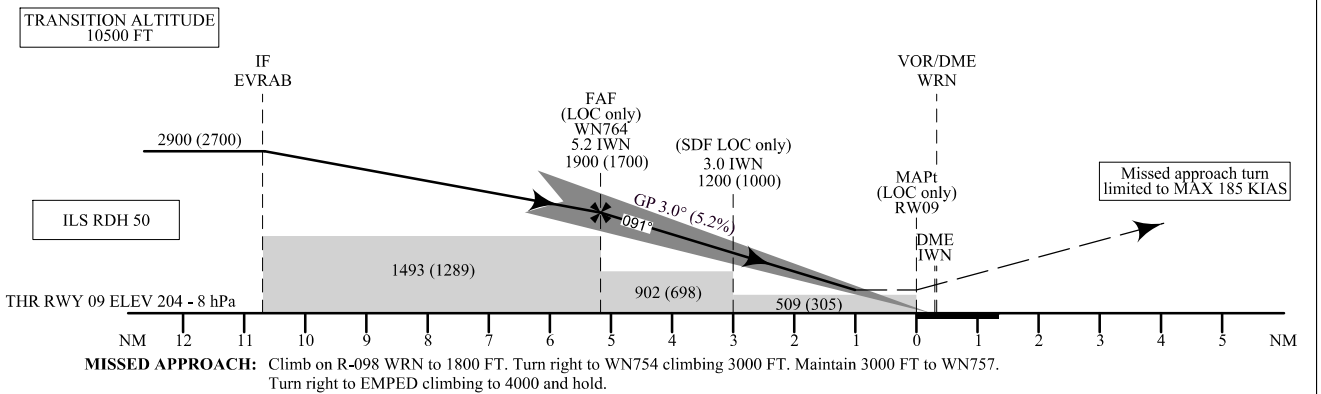
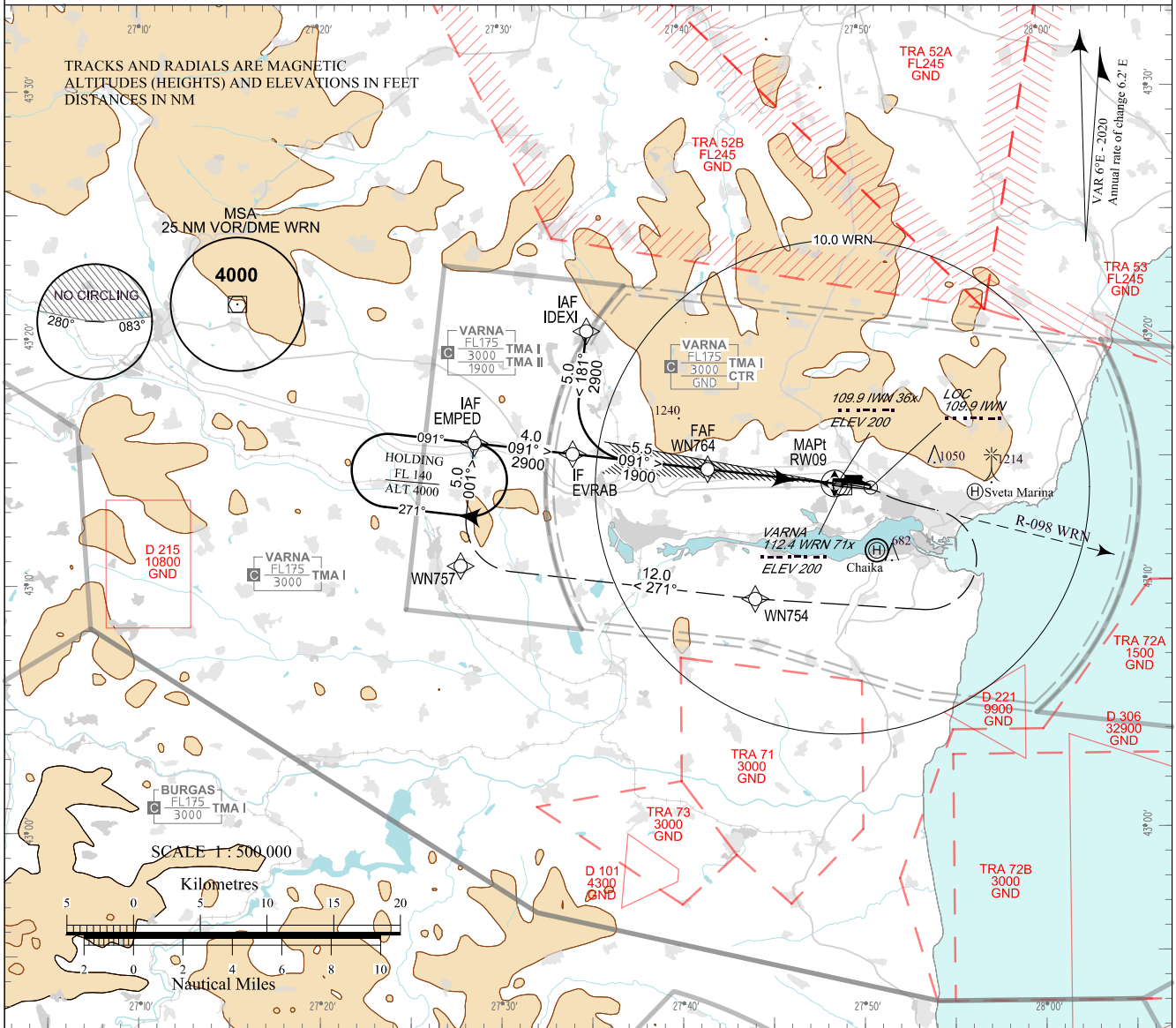


**INSTRUMENT
APPROACH
CHART - ICAO**

AERODROME ELEV 230 - 9 hPa APP 124.600 TWR 119.500 ATIS 126.880
 THR RWY 09 ELEV 204 - 8 hPa 130.450 118.900
 233.250 296.725
 OCH RELATED TO THR RWY 09 ELEV 121.500 121.500
 CIRCLING OCH RELATED TO AD ELEV 243.000 243.000

**VARNA
ILS z or LOC z
RWY 09**



| OCA (OCH) | A | B | C | D |
|---------------------------------|-----------------------------|------------------------|-------------------------|--------------------------|
| CAT I Missed APCH gradient 2.5% | m 133 (71) ft 437 (233) | 136 (74) 447 (243) | 139 (77) 457 (253) | 142 (80) 466 (262) |
| CAT I Missed APCH gradient 4.0% | m 116 (54) ft 381 (177) | 119 (57) 391 (187) | 122 (60) 401 (197) | 125 (63) 410 (207) |
| LOC only | m 180 (120) ft 580 (380) | | | |
| SDF not received | m 280 (215) ft 910 (710) | | | |
| Circling | m 215 (145) ft 700 (470) | 275 (205) 900 (670) | 350 (280) 1150 (920) | 400 (330) 1300 (1070) |

| DME IWN NM / km | 5 / 9.3 | 4 / 7.4 | 3 / 5.6 | 2 / 3.7 |
|-----------------|-------------|-------------|-------------|-----------|
| ALT (HGT) ft | 1840 (1640) | 1520 (1320) | 1200 (1000) | 890 (690) |
| ALT (HGT) m | 560 (500) | 465 (405) | 370 (310) | 270 (210) |

DME IWN reads ZERO at THR 09

| GS | kt | 60 | 80 | 100 | 120 | 140 | 160 | 180 |
|-------------------|---------|------|------|------|------|------|------|------|
| FAF - MAPt 5.2 NM | min:sec | 5:12 | 3:54 | 3:07 | 2:36 | 2:14 | 1:57 | 1:44 |
| Rate of descent | ft/min | 316 | 421 | 527 | 632 | 737 | 843 | 948 |

CIRCLING SOUTH OF AD ONLY

Timing is not authorized for defining MAPt

Instrument approach procedures

| P/T | WPT ID | Flyover | Track MAG (GEO) | DIST NM | Turn Direction | Speed KT | ALT FT |
|--|-------------|---------|--------------------|------------|-------------------|-------------|-----------|
| From IAF IDEXI | | | | | | | |
| IF | IDEXI / IAF | - | - | - | - | 220- | 4000+ |
| TF | EVRAB / IF | - | 181°(186.7°T) | 5.0 | Left | 190- | 2900+ |
| TF | WN764 / FAF | - | 091°(096.7°T) | 5.5 | - | - | 1900+ |
| TF | RW09 / MAPt | Yes | 091°(096.8°T) | 5.2 | - | - | - |
| Climb on R - 098 WRN to 1800FT. Turn right to WN754. | | | | | | | |
| DF | WN754 | - | - | - | Right | - | - |
| TF | WN757 | - | 271°(276.9°T) | 12.0 | Right | 220- | 3000- |
| TF | EMPED MAHF | - | 001°(006.7°T) | 5.0 | - | 220- | 4000+ |
| From IAF EMPED | | | | | | | |
| IF | EMPED / IAF | - | - | - | - | 220- | 4000+ |
| TF | EVRAB / IF | - | 091°(096.7°T) | 4.0 | - | 190- | 2900+ |
| TF | WN764 / FAF | - | 091°(096.7°T) | 5.5 | - | - | 1900+ |
| TF | RW09 / MAPt | Yes | 091°(096.8°T) | 5.2 | - | - | - |
| Climb on R - 098 WRN to 1800FT. Turn right to WN754. | | | | | | | |
| DF | WN754 | - | - | - | Right | - | - |
| TF | WN757 | - | 271°(276.9°T) | 12.0 | Right | 220- | 3000- |
| TF | EMPED MAHF | - | 001°(006.7°T) | 5.0 | - | 220- | 4000+ |

Holding

| P/T | WPT ID | Flyover | Track MAG (GEO) | DIST NM | Turn Direction | Speed KT | ALT FT |
|-----|--------|---------|--------------------|------------|-------------------|-------------|-----------|
| HM | EMPED | Yes | 091°(096.6°T) | 1 min | Right | - | 4000+ |

See page LBWN AD 2 - 61.1 for waypoint coordinates