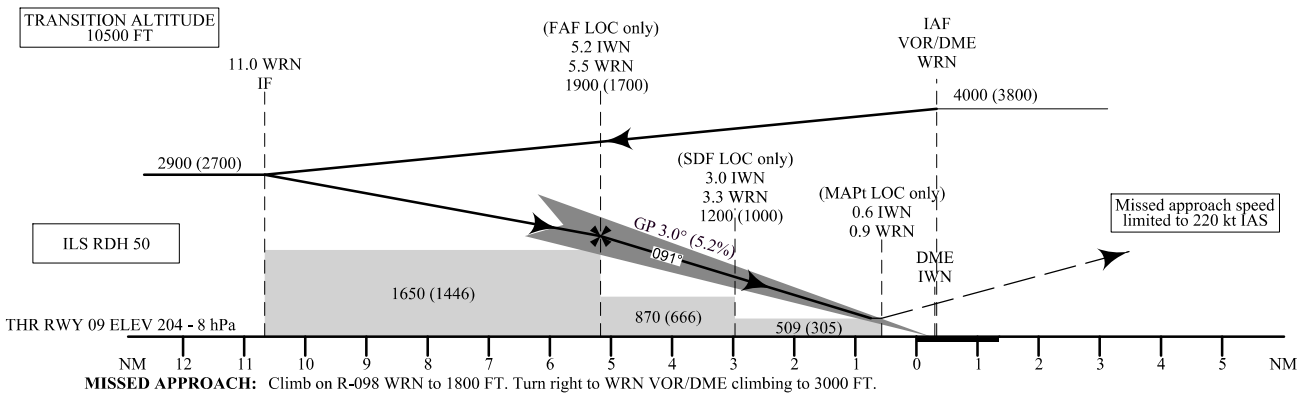
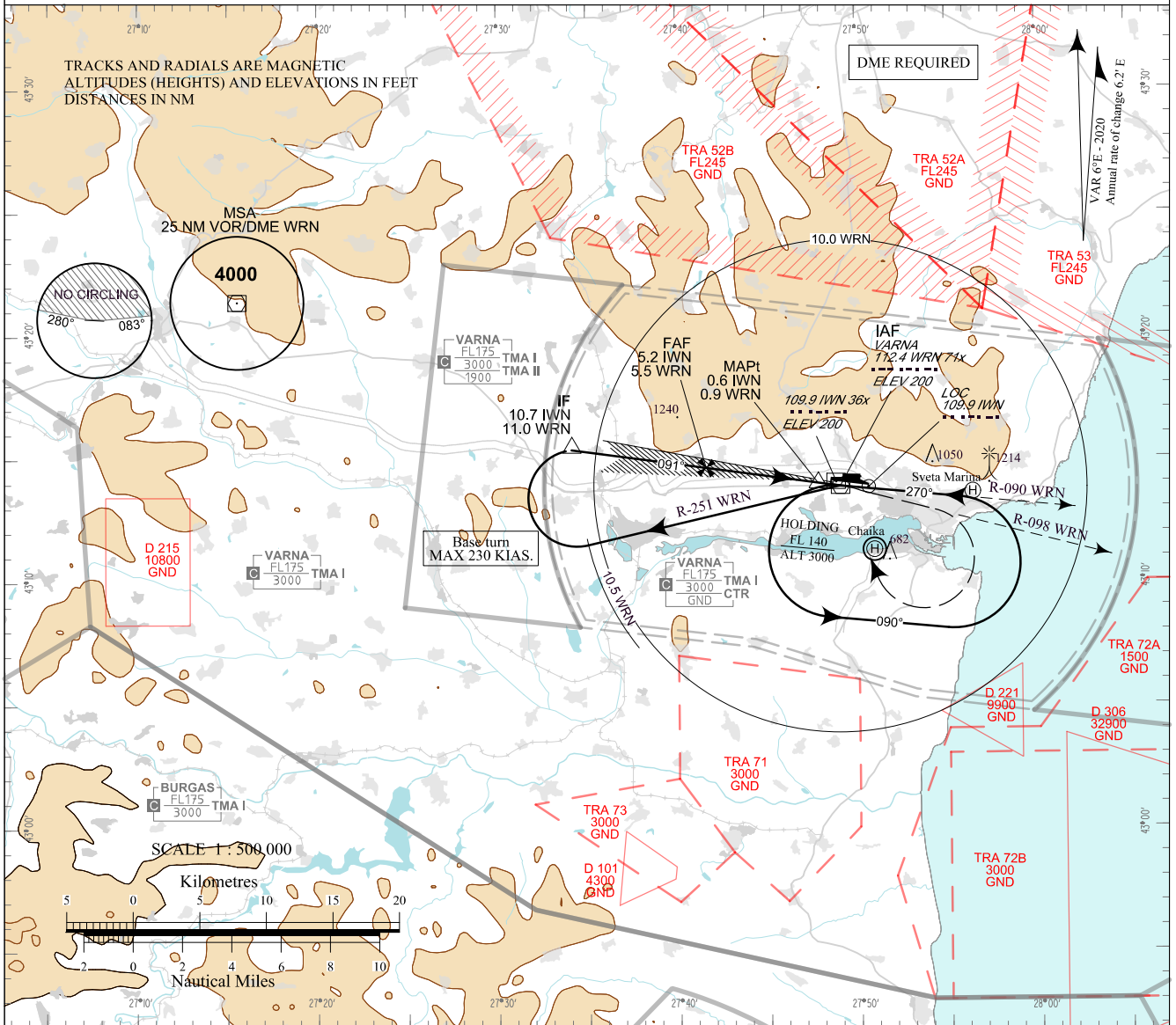


**INSTRUMENT  
APPROACH  
CHART - ICAO**

AERODROME ELEV 230 - 9 hPa      APP 124.600      TWR 119.500      ATIS 126.880  
THR RWY 09 ELEV 204 - 8 hPa      130.450      118.900  
233.250      296.725  
OCH RELATED TO THR RWY 09 ELEV 121.500      121.500  
CIRCLING OCH RELATED TO AD ELEV 243.000      243.000

**VARNA**  
**ILS y or LOC y**  
**RWY 09**



OCA (OCH)	A	B	C	D
CAT I Missed APCH gradient 2.5%	m 133 (71)	136 (74)	139 (77)	142 (80)
	ft 437 (233)	447 (243)	457 (253)	466 (262)
CAT I Missed APCH gradient 4.0%	m 116 (54)	119 (57)	122 (60)	125 (63)
	ft 381 (177)	391 (187)	401 (197)	410 (207)
LOC only	m 155 (95)			
	ft 510 (310)			
SDF not received	m 265 (205)			
	ft 870 (670)			
Circling	m 215 (145)	275 (205)	350 (280)	400 (330)
	ft 700 (470)	900 (670)	1150 (920)	1300 (1070)

DME IWN NM / km	5 / 9.3	4 / 7.4	3 / 5.6	2 / 3.7
DME WRN NM / km	5.3 / 9.8	4.3 / 8.0	3.3 / 6.1	2.3 / 4.3
ALT (HGT) ft	1840 (1640)	1520 (1320)	1200 (1000)	890 (690)
ALT (HGT) m	560 (500)	465 (405)	370 (305)	270 (210)

DME IWN reads ZERO at THR 09

GS	kt	60	80	100	120	140	160	180
FAF - MAPt 4.6 NM	min:sec	4:36	3:27	2:46	2:18	1:58	1:44	1:32
Rate of descent	ft/min	316	421	527	632	737	843	948

CIRCLING SOUTH OF AD ONLY

Timing is not authorized for defining MAPt

**See page LBWN AD 2 - 61.1 for waypoint coordinates**