

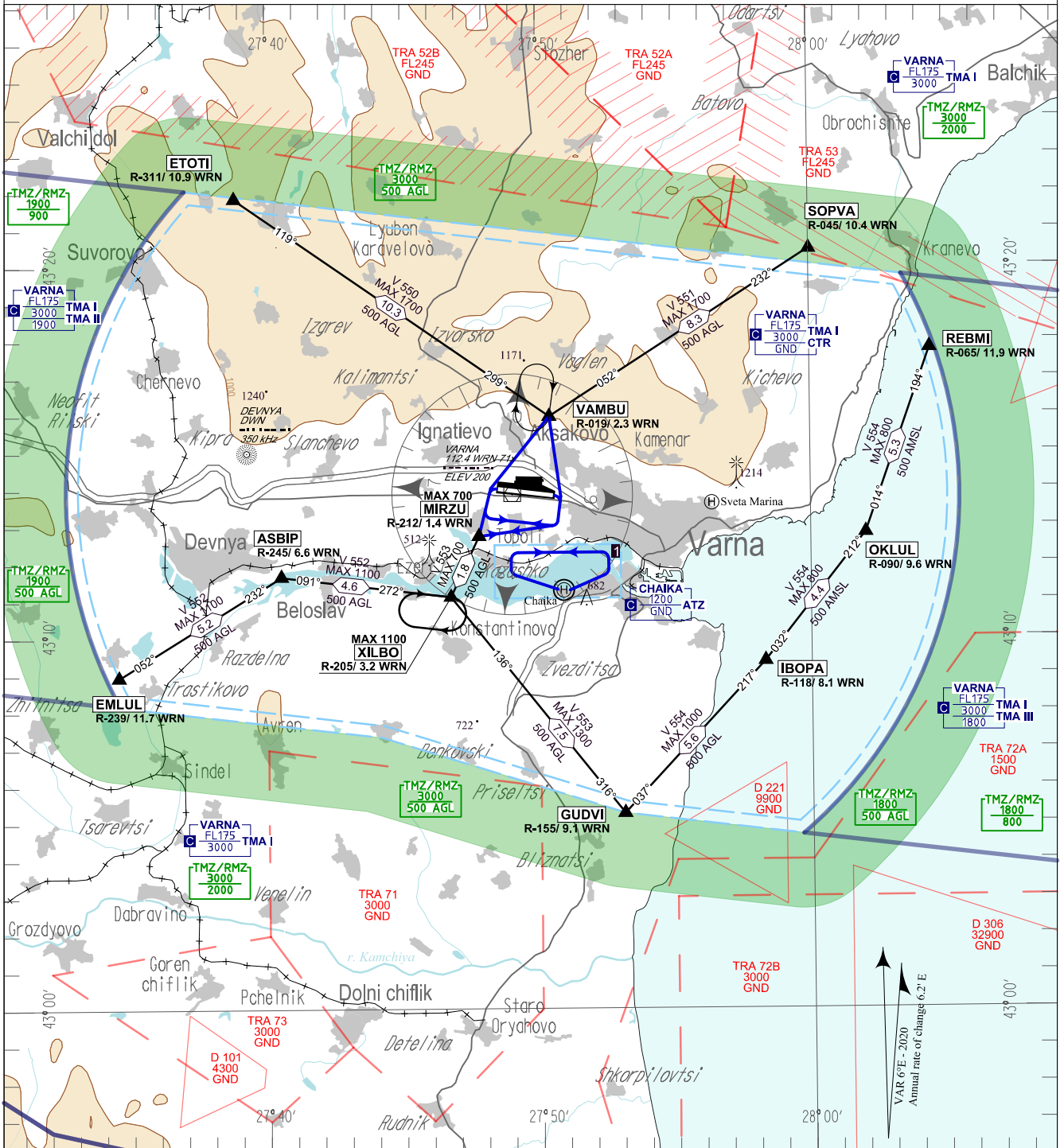
**VISUAL APPROACH
CHART - ICAO**

TRANSITION ALT 10500 FT
TRANSITION LEVEL BY ATC

AD ELEV 230 - 9 hPa
ARP 43°13'55" N
027°49'31" E

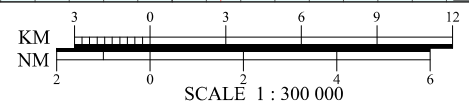
APP	TWR	ATIS
124.600	119.500	126.880
130.450	118.900	
233.250	296.725	
121.500	121.500	
243.000	243.000	

**VARNA
VFR ROUTES**



BEARINGS, TRACKS AND RADIALS ARE MAGNETIC
ALTITUDES (HEIGHTS) AND ELEVATIONS IN FEET
DISTANCES IN NM

VASIS
RWY 09 - PAPI 3.0° MEHT 50 DUAL
RWY 27 - PAPI 3.5° MEHT 53 DUAL



Helicopter flights are conducted up to 700 FT ALT
Information and relevant instructions are provided by Varna TWR.

These procedures are provided for
aircraft with MTOW up to 5700 kg.

Aircraft must not leave the confines of 2.0 km (1.1 NM)
on each side of the track without prior coordination with ATC.

VFR RCF PROCEDURE VARNA:

1. SQUAWK 7600.
2. Leave Varna CTR and Varna TMA strictly following the published routes
3. Proceed to a different AD.
3. If flying to a different AD is considered unsafe proceed via the established routes to VAMBU or XILBO and hold.
4. Flash LDG LGT and watch TWR for visual signals.

Маршрути за полети по правилата за визуални полети
Visual Flight Rules (VFR) Routes

Route designator Name of significant points Coordinates	Waypoint IDENT of VOR/DME BRG & DIST km (NM) ELEV DME Antenna m (ft)	MAG BRG Geodesic DIST km (NM)	Upper Limits Lower Limits Airspace classification	Lateral Limits	Direction of cruising levels		Remarks Controlling unit Frequency
					Odd	Even	
1	2	3	4	5	6		7
V550	Total DIST km (NM) 19.1 (10.3)						SSR transponder and continuous two-way air-ground communication required. AVBL ABV upper limit after coordination with respective ATS unit. Varna APP: 124.600 MHz, 130.450 MHz, 233.250 MHz Varna TWR: 119.500 MHz, 118.900 MHz, 296.725 MHz FIC Sofia: 130.600 MHz
▲ ETOTI (1.9km NW of village Nikolaevka) 432151N 0273850E	WRN 311° 20.2 (10.9) 60 (200)	119°/299° 19.1 (10.3)	1700FT 500FT AGL Class C	2.2NM	↓		
▲ VAMBU (E of town Aksakovo) 431558N 0275024E	WRN 020° 4.3 (2.3) 60 (200)				↑		
Note: ▲ - Compulsory △ - On- request							

Route designator Name of significant points Coordinates	Waypoint IDENT of VOR/DME BRG & DIST km (NM) ELEV DME Antenna m (ft)	MAG BRG Geodesic DIST km (NM)	Upper Limits Lower Limits Airspace classification	Lateral Limits	Direction of cruising levels		Remarks Controlling unit Frequency
					Odd	Even	
1	2	3	4	5	6		7
V551	Total DIST km (NM) 15.4 (8.3)						SSR transponder and continuous two-way air-ground communication required. AVBL ABV upper limit after coordination with respective ATS unit. Varna APP: 124.600 MHz, 130.450 MHz, 233.250 MHz Varna TWR: 119.500 MHz, 118.900 MHz, 296.725 MHz FIC Sofia: 130.600 MHz
▲ SOPVA (4.0km W of village Kranevo) 432026N 0280000E	WRN 045° 19.2 (10.4) 60 (200)	232°/052° 15.4 (8.3)	1700FT 500FT AGL Class C	2.2NM	↓		
▲ VAMBU (E of town Aksakovo) 431558N 0275024E	WRN 020° 4.3 (2.3) 60 (200)				↑		
Note: ▲ - Compulsory △ - On- request							

Маршрути за полети по правилата за визуални полети
Visual Flight Rules (VFR) Routes

Route designator Name of significant points Coordinates	Waypoint IDENT of VOR/DME BRG & DIST km (NM) ELEV DME Antenna m (ft)	MAG BRG Geodesic DIST km (NM)	Upper Limits Lower Limits Airspace classification	Lateral Limits	Direction of cruising levels		Remarks Controlling unit Frequency	
					Odd	Even		
1	2	3	4	5	6		7	
V552	Total DIST km (NM) 18.1 (9.8)							
▲ EMLUL (S of village Padina) 430857N 0273430E	WRN 239° 21.7 (11.7) 60 (200)	052°/232° 9.6 (5.2)	1100FT 500FT AGL Class C	2.2NM	↑		SSR transponder and continuous two-way air-ground communication required. AVBL ABV upper limit after coordination with respective ATS unit. Varna APP:124.600 MHz, 130.450MHz, 233.250 MHz Varna TWR:119.500 MHz, 118.900 MHz, 296.725 MHz FIC Sofia: 130.600 MHz	
▲ ASBIP (factory) 431140N 0274030E	WRN 245° 12.3 (6.6) 60 (200)							
▲ XILBO (2.8km N of village Konstantinovo) 431107N 0274644E	WRN 206° 6.0 (3.2) 60 (200)	091°/271° 8.5 (4.6)	2.2NM	↓				
Note: ▲ - Compulsory △ - On- request								

Route designator Name of significant points Coordinates	Waypoint IDENT of VOR/DME BRG & DIST km (NM) ELEV DME Antenna m (ft)	MAG BRG Geodesic DIST km (NM)	Upper Limits Lower Limits Airspace classification	Lateral Limits	Direction of cruising levels		Remarks Controlling unit Frequency	
					Odd	Even		
1	2	3	4	5	6		7	
V553	Total DIST km (NM) 17.1 (9.3)							
▲ GUDVI (NE of village Bliznatsi) 430516N 0275305E	WRN 155° 16.8 (9.1) 60 (200)	316°/136° 13.8 (7.5)	1300FT 500FT AGL Class C	2.2NM	↓		MAX ALT at WPT XILBO 1100FT AMSL SSR transponder and continuous two-way air-ground communication required. AVBL ABV upper limit after coordination with respective ATS unit. Varna APP:124.600 MHz, 130.450MHz, 233.250 MHz Varna TWR: 119.500 MHz, 118.900 MHz, 296.725 MHz FIC Sofia: 130.600 MHz	
▲ XILBO (2.8km N of village Konstantinovo) 431107N 0274644E	WRN 206° 6.0 (3.2) 60 (200)							
▲ MIRZU (S of Klise bair industrial zone, village Topoli) 431244N 0274750E	WRN 212° 2.7 (1.4) 60 (200)	201°/021° 3.3 (1.8)	700FT 500FT AGL Class C	↑				
Note: ▲ - Compulsory △ - On- request								

Маршрути за полети по правилата за визуални полети
Visual Flight Rules (VFR) Routes

Route designator Name of significant points Coordinates	Waypoint IDENT of VOR/DME BRG & DIST km (NM) ELEV DME Antenna m (ft)	MAG BRG Geodesic DIST km (NM)	Upper Limits Lower Limits Airspace classification	Lateral Limits	Direction of cruising levels Odd Even	Remarks Controlling unit Frequency
1	2	3	4	5	6	7
V554	Total DIST km (NM) 28.2 (15.3)					
▲ GUDVI (NE of village Bliznatsi) 430516N 0275305E	WRN 155° 16.8 (9.1) 60 (200)	037°/217° 10.4 (5.6)	1000FT 500FT AGL Class C	2.2NM	↓	SSR transponder and continuous two-way air-ground communication required. AVBL ABV upper limit after coordination with respective ATS unit. Varna APP: 124.600 MHz, 130.450MHz, 233.250 MHz Varna TWR: 119.500 MHz, 118.900 MHz, 296.725 MHz FIC Sofia: 130.600 MHz
▲ IBOPA (2.8km SE of Galata) 430921N 0275818E	WRN 118° 15.1 (8.1) 60 (200)	032°/212° 8.1 (4.4)		2.2NM		
▲ OKLUL (2.8km SE of St. Constantine and Helena resort) 431248N 0280202E	WRN 090° 17.7 (9.6) 60 (200)		800FT 500FT AMSL Class C	2.2NM		
▲ REBMI (5.0km SE of village Kranevo) 431745N 0280426E	WRN 065° 22.0 (11.9) 60 (200)	014°/194° 9.7 (5.3)		2.2NM		
Note: ▲ - Compulsory △ - On- request						