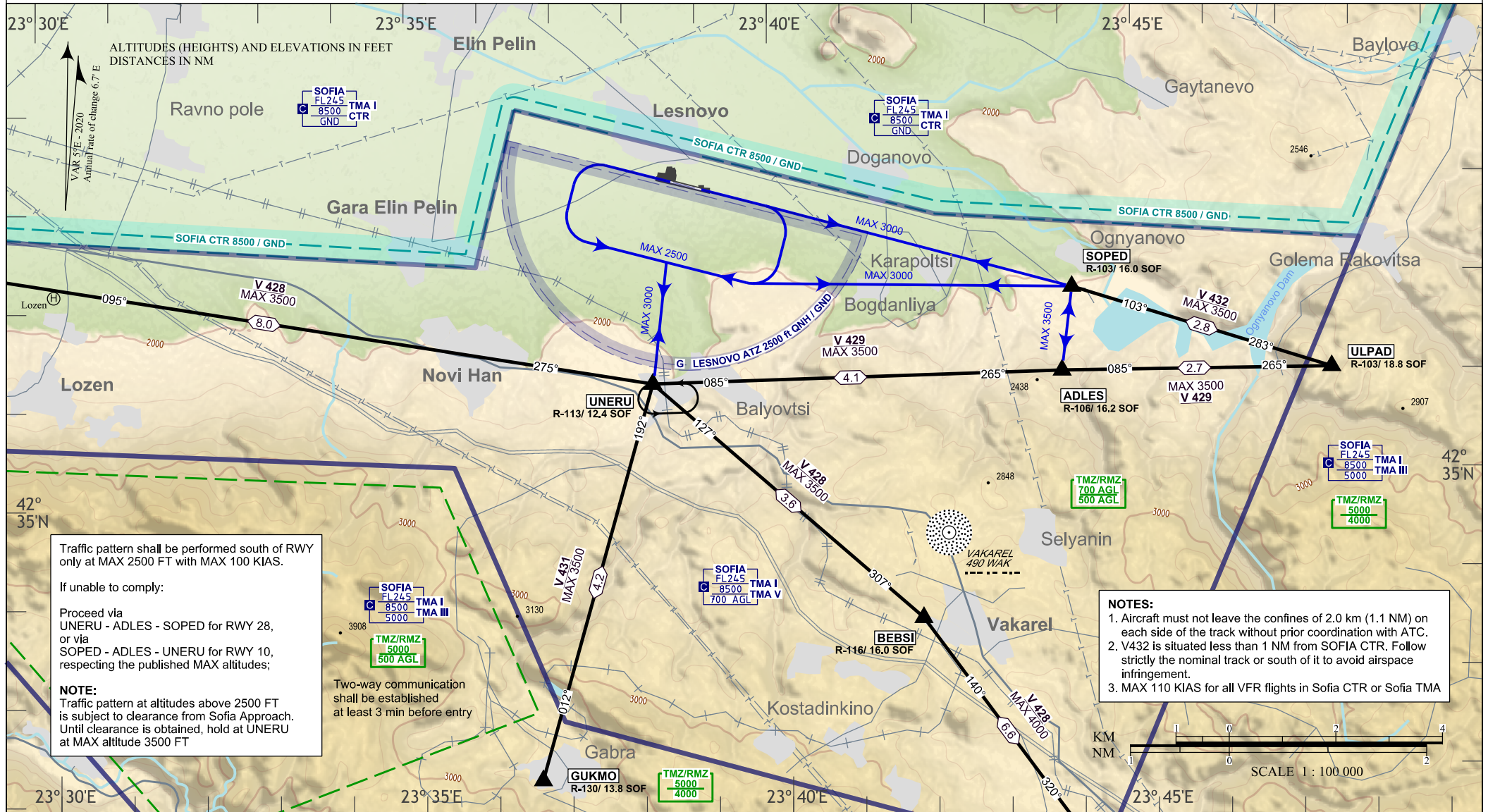


**VISUAL APPROACH
CHART - ICAO**

AD ELEV 1824 ft - 65 hPa TRANSITION ALT 10500 FT LESNOVO 122.250 SOFIA ATIS 126.680 SOFIA APP 123.700 SOFIA FIC 130.600
ARP 42 38 04N 023 38 47E TRANSITION LEVEL BY ATC

**LESNOVO
VFR ROUTES**



Traffic pattern shall be performed south of RWY only at MAX 2500 FT with MAX 100 KIAS.

If unable to comply:

Proceed via
UNERU - ADLES - SOPED for RWY 28,
or via
SOPED - ADLES - UNERU for RWY 10,
respecting the published MAX altitudes;

NOTE:
Traffic pattern at altitudes above 2500 FT is subject to clearance from Sofia Approach. Until clearance is obtained, hold at UNERU at MAX altitude 3500 FT

NOTES:

- Aircraft must not leave the confines of 2.0 km (1.1 NM) on each side of the track without prior coordination with ATC.
- V432 is situated less than 1 NM from SOFIA CTR. Follow strictly the nominal track or south of it to avoid airspace infringement.
- MAX 110 KIAS for all VFR flights in Sofia CTR or Sofia TMA

INTENTIONALLY LEFT BLANK